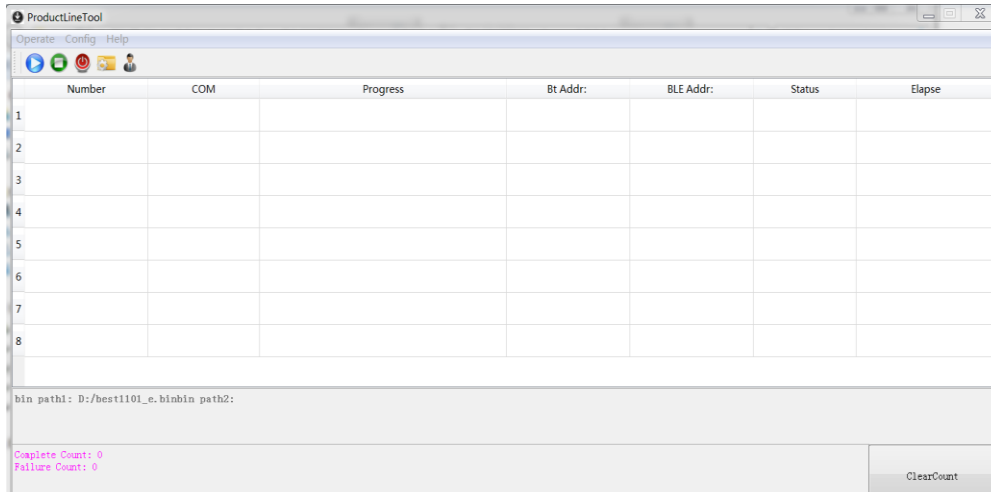



# PineBuds Pro firmware Programming Tool

1. Execute dld\_main application and open main UI menu:

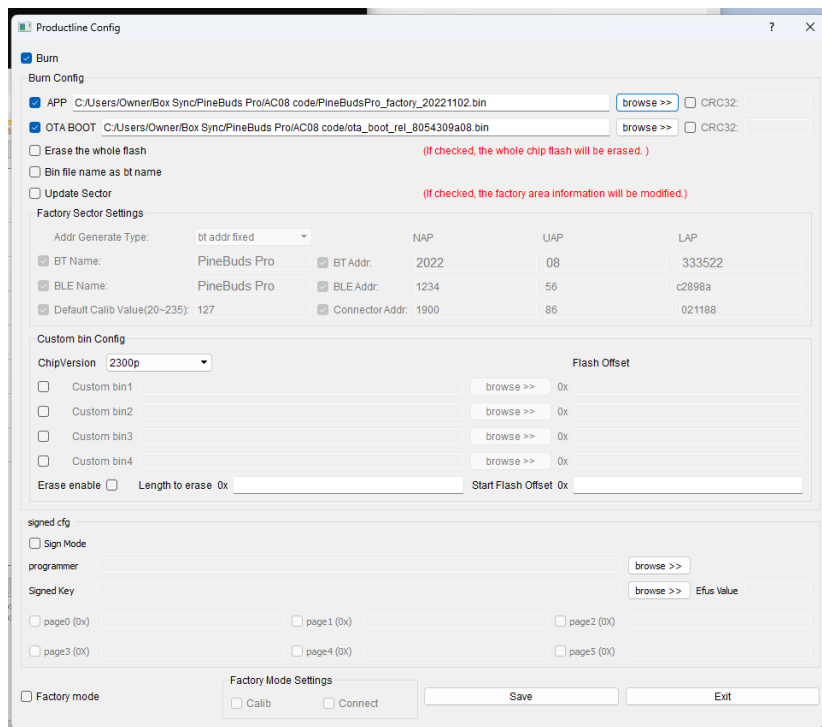


2. Click  icon, enter "Production Config" menu:

- Program APP binary file: tick APP box, then click Browse Button to select folder path contains APP binary file;

- Program OTA BOOT binary file: tick OTA BOOT box, then click Browse Button to select folder path contains OTA BOOT binary file;


(Note: For default factory, both APP and OTA needs to be loaded. For community developed firmware, mostly only need to program APP)

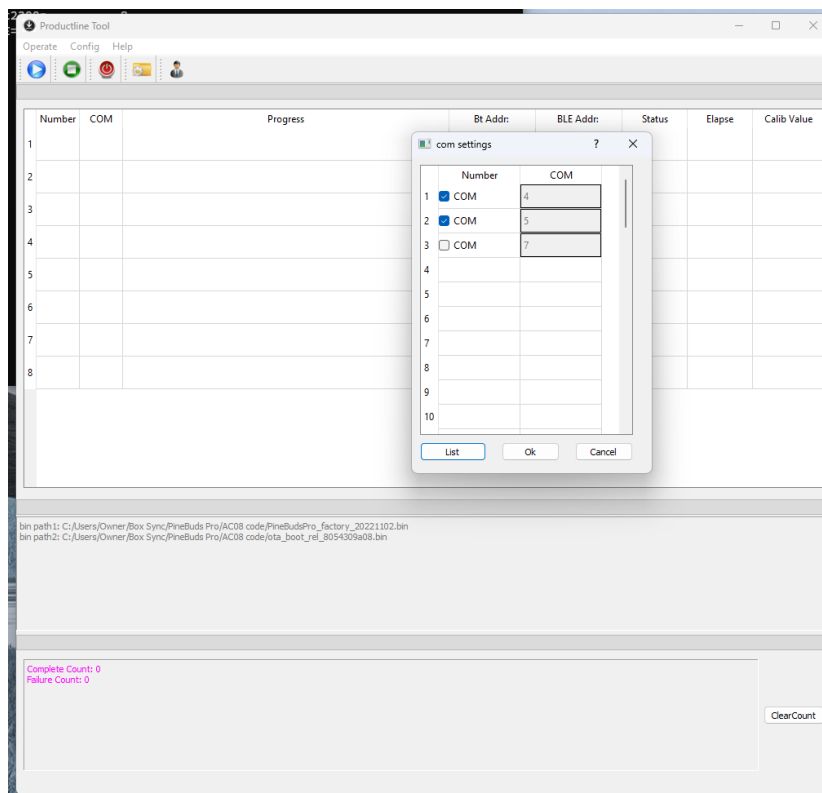


After the configure the folder path and option selection, click Save Button to save the configuration and return back to main menu.


Note: Keep the Factory mode option untick.

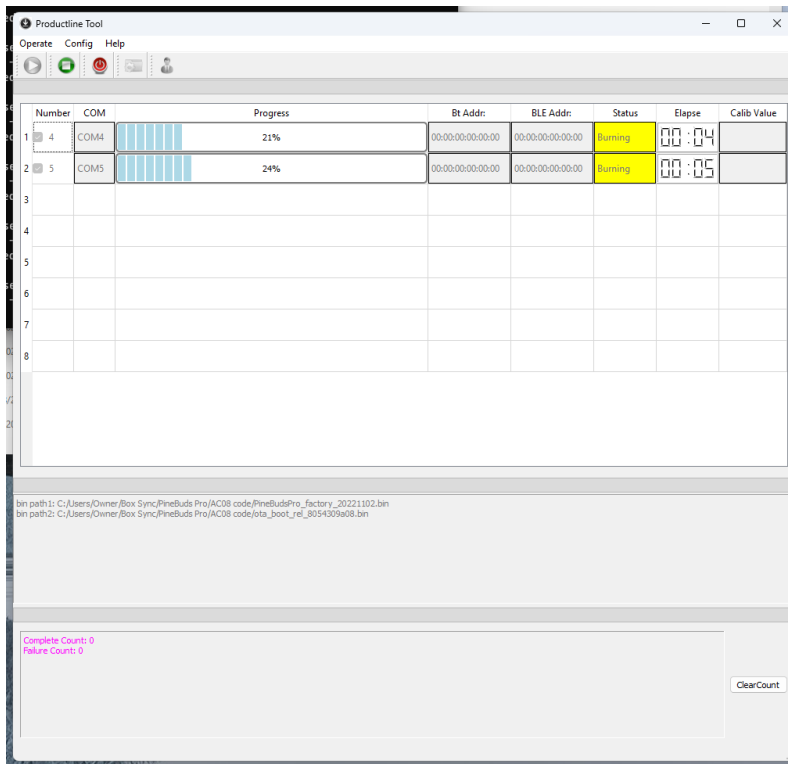
### 3. Setting serial port


Click  icon on main menu and enter com setting menu:

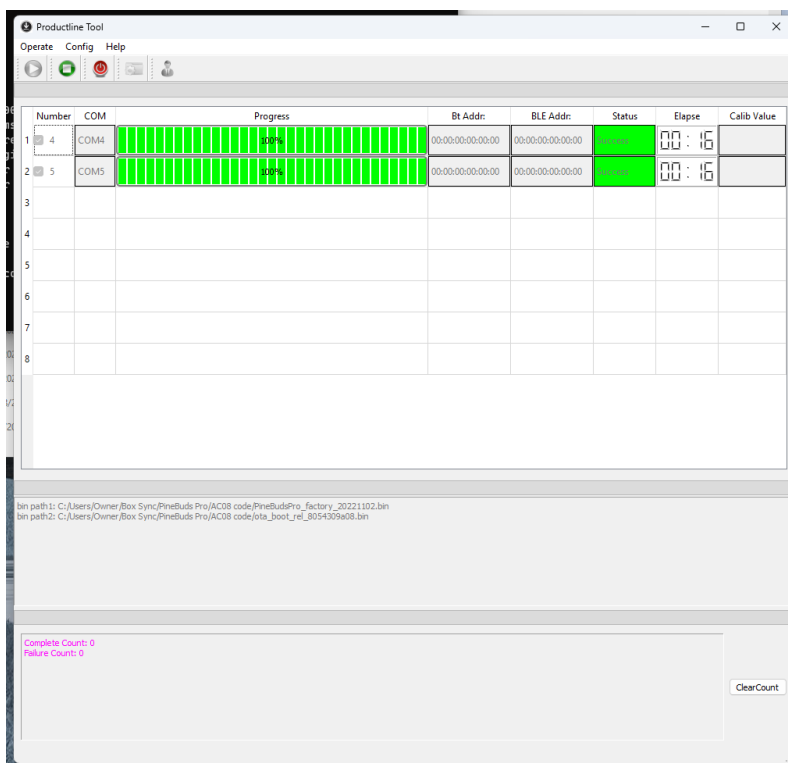


Click list button to list out available serial port selection, tick the two COM ports that attached to PineBuds Pro charging cradle. After selection, click OK exit back to main menu.

4. Takes both earbuds out from charging case and click All Start button  on main menu. Place both earbuds back to charging case, wait for about 30 seconds and firmware burning process started.



5. Green bar appear when program success. Press Stop button  and takes both earbuds out from charging case, then place both earbuds back in charging case. Keep both earbuds in charging case for 30 seconds, both earbuds LED light turn red indicate self-pairing in process which takes another 30 seconds .



If program fail, take both earbuds out from charging cradle and reset again, repeat step 2.