

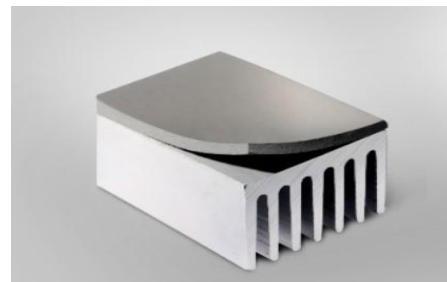
## Lms-Tc series Silicone thermal pad

### ◆ Specifications:

- ◆ TC150, made of Silicone rubber, 1.50w/m-k  
Good thermal conductivity, can Heat sink your CPU/GPU  
Meet With ROHS standard
- ◆ Does not contain any hazardous materials, excellent insulation, flame retardant, high and low temperature resistance, high compression and low oil yield excellent thermal conductivity and can be used to populate the structure cracks Specifications
- ◆ 200mm\*400mm
- ◆ Roll:300mm \* 50M

### Typical Application:

- ◆ 1. LED light, LED bulb,
- ◆ 2. Switching power supply
- ◆ 3. Video equipment
- ◆ 4. Mobile equipment
- ◆ 5. Communication equipment
- ◆ 6. Medical equipment
- ◆ .....and so on



### Application method:

For best results, the surface should be kept clean, free from grease and impurities, first remove the release film and put on the surface of the heat sink Assembly, exert some pressure or its fixtures, fitting close on the surface. According to environmental demands, die-cut into different shapes, sizes and can add to stick the double-sided adhesive.

| Test Item | LMS TC4             | Units | Tolerance | Test Method |
|-----------|---------------------|-------|-----------|-------------|
| Color     | Gray/Blue/RED/Black | /     | /         | Visual      |

|                            |                             |                         |              |                   |
|----------------------------|-----------------------------|-------------------------|--------------|-------------------|
| <b>Specifications</b>      | <b>400*200/15.75*7.87</b>   | <b>mm/Inch</b>          | <b>±10%</b>  | <b>ASTM D374</b>  |
| <b>Specific Gravity</b>    | <b>4.2</b>                  | <b>g/cm<sup>3</sup></b> | <b>±0.20</b> | <b>ASTMD792</b>   |
| <b>Conductivity</b>        | <b>1.5~6.0</b>              | <b>w/m.k</b>            | <b>±0.30</b> | <b>ASTM D5470</b> |
| <b>Breakdown Voltage</b>   | <b>&gt;6.00</b>             | <b>KV/mm</b>            | <b>±0.30</b> | <b>ASTM D149</b>  |
| <b>Thickness</b>           | <b>0.30 to 10.00</b>        | <b>mm</b>               | <b>±10%</b>  | <b>ASTM D374</b>  |
| <b>Hardness</b>            | <b>30</b>                   | <b>Shore 00</b>         | <b>±5.00</b> | <b>ASTM D2240</b> |
| <b>Flammability Test</b>   | <b>V0</b>                   | <b>/</b>                | <b>/</b>     | <b>UL94</b>       |
| <b>Continuous Use Temp</b> | <b>-40.00 to 200.00</b>     | <b>°C</b>               |              |                   |
| <b>Self -Adhesive</b>      | <b>Double Side Adhesive</b> | <b>/</b>                | <b>/</b>     |                   |