




Verification Report

Applicant : Pine Store Sdn Bhd
Address : 18-2-15, Gembira Parade, Lorong Delima 1, Island Glades, 11700 Penang, Malaysia.

Report on the submitted samples said to be:

Sample Name(s) : PineTab-V tablet
Trade Mark :  PINE64
Part No. : PINETAB-V (test sample), PINETAB-KEY-4+64GB-RISCV, PINETAB-KEY-8+128GB-RISCV, PINETAB-4+64GB-RISCV, PINETAB-8+128GB-RISCV
Sample Received Date : August 04, 2023
Testing Period : August 04, 2023 ~ August 09, 2023
 August 24, 2023 ~ August 25, 2023
Date of Report : August 25, 2023
Testing Location : 901, No.40 Building, Xialang Industrial Zone, Heshuikou Community, Matian Street, Guangming District, Shenzhen, Guangdong, China
Results : Please refer to next page(s).

TEST REQUEST	CONCLUSION
As specified by client, based on the performed tests on submitted sample, the result of Lead(Pb), Cadmium(Cd), Mercury(Hg), Hexavalent Chromium(Cr(VI)), PBBs, PBDEs, Dibutyl Phthalate(DBP), Butylbenzyl Phthalate(BBP), Di-2-ethylhexyl Phthalate(DEHP) and Diisobutyl phthalate(DIBP) content comply with the limits set by RoHS Directive 2011/65/EU with amendment (EU) 2015/863.	PASS

Signed for and on behalf of LCS



Lily dan



**A. EU RoHS Directive 2011/65/EU and its amendment directives**

Test method: Refer to IEC 62321-1:2013&IEC 62321-2:2021&IEC 62321-3-1:2013, Screening by X-ray Fluorescence Spectroscopy (XRF).

Test result(s):

Sample No.	Sample Description	Screening Result(s)						Date of sample submission/ Resubmission
		Cd	Pb	Hg	Cr [▼]	Br [▼]		
						PBBs	PBDEs	
1	Black plated silver metal shell	BL	BL	BL	BL	/	/	2023-08-04
2	Color label adhesive	BL	BL	BL	BL	BL	BL	2023-08-04
3	Colorless transparent plastic sheet adhesive	BL	BL	BL	BL	BL	BL	2023-08-04
4	Colorless transparent plastic lampshade	BL	BL	BL	BL	BL	BL	2023-08-04
5	Grey cloth adhesive	BL	BL	BL	BL	BL	BL	2023-08-04
6	Black cloth adhesive	BL	BL	BL	BL	BL	BL	2023-08-04
7	Black plastic shell	BL	BL	BL	BL	BL	BL	2023-08-04
8	Yellow FPC	BL	BL	BL	BL	BL	BL	2023-08-04
9	Silver metal screw	OL	OL	BL	X	/	/	2023-08-04
10	Black plastic fixing parts	BL	BL	BL	BL	BL	BL	2023-08-04
11	Gold metal contacts	BL	BL	BL	BL	/	/	2023-08-04
12	Silver metal screw	BL	X	BL	X	/	/	2023-08-04
13	Black FPC	BL	BL	BL	BL	BL	BL	2023-08-04
14	Soldering tin	BL	BL	BL	BL	/	/	2023-08-04
15	Black plastic wire cover	BL	BL	BL	BL	BL	BL	2023-08-04
16	Gold metal port housing	BL	BL	BL	BL	/	/	2023-08-04
17	Silver metal wire core	BL	BL	BL	BL	/	/	2023-08-04
18	Colorless transparent plastic wire cover	BL	BL	BL	BL	BL	BL	2023-08-04
19	Silver metal shell	BL	BL	BL	X	/	/	2023-08-04
20	Black plastic shell	BL	BL	BL	BL	BL	BL	2023-08-04
21	Silver metal magnet	BL	BL	BL	BL	/	/	2023-08-04
22	Silver metal shell	BL	BL	BL	BL	/	/	2023-08-04
23	Colorless transparent plastic film	BL	BL	BL	BL	BL	BL	2023-08-04
24	Copper colored wire	BL	BL	BL	BL	/	/	2023-08-04
25	Silver metal sheet	BL	BL	BL	BL	/	/	2023-08-04
26	Silver metal sheet	BL	BL	BL	BL	/	/	2023-08-04
27	Silver metal pins	BL	BL	BL	BL	/	/	2023-08-04



Shenzhen LCS Compliance Testing Laboratory Ltd.

Add: 901, No.40 Building, Xialang Industrial Zone, Heshuikou Community, Matian Street, Guangming District, Shenzhen, Guangdong, China

Tel: +(86) 0755-82591330 | E-mail: webmaster@lcs-cert.com | Web: www.lcs-cert.com

Scan code to check authenticity



Sample No.	Sample Description	Screening Result(s)						Date of sample submission/ Resubmission
		Cd	Pb	Hg	Cr [▼]	Br [▼]		
						PBBs	PBDEs	
28	Black plastic port housing	BL	BL	BL	BL	BL	BL	2023-08-04
29	Silver metal screw	BL	OL	BL	X	/	/	2023-08-04
30	Black plastic sheet	BL	BL	BL	BL	BL	BL	2023-08-04
31	Colorless transparent glass sheet	BL	BL	BL	BL	BL	BL	2023-08-04
32	Silver metal shell	BL	BL	BL	BL	/	/	2023-08-04
33	Black plastic shell	BL	BL	BL	BL	BL	BL	2023-08-04
34	Colorless transparent plastic lenses	BL	BL	BL	BL	BL	BL	2023-08-04
35	Copper colored wire	BL	BL	BL	BL	/	/	2023-08-04
36	Silver metal wire card	BL	BL	BL	BL	/	/	2023-08-04
37	White plastic plug housing	BL	BL	BL	BL	BL	BL	2023-08-04
38	Black non-woven fabric adhesive	BL	BL	BL	BL	BL	BL	2023-08-04
39	Black soft plastic sleeve	BL	BL	BL	BL	BL	BL	2023-08-04
40	Gold metal shell	OL	BL	BL	X	/	/	2023-08-04
41	Purple plastic film	BL	BL	BL	BL	BL	BL	2023-08-04
42	White plastic ring	BL	BL	BL	BL	BL	BL	2023-08-04
43	Silver metal ring	BL	BL	BL	BL	BL	BL	2023-08-04
44	Gold metal sheet	BL	BL	BL	BL	/	/	2023-08-04
45	Silver metal sheet	BL	BL	BL	BL	/	/	2023-08-04
46	Green PCB board	BL	BL	BL	BL	BL	BL	2023-08-04
47	Black plastic wire cover	BL	BL	BL	BL	BL	BL	2023-08-04
48	Silver metal wire core	BL	BL	BL	BL	/	/	2023-08-04
49	Red plastic wire cover	BL	BL	BL	BL	BL	BL	2023-08-04
50	Black plastic frame	BL	BL	BL	BL	BL	BL	2023-08-04
51	Colorless transparent plastic sheet	BL	BL	BL	BL	BL	BL	2023-08-04
52	Black plastic tape	BL	BL	BL	BL	BL	BL	2023-08-04
53	Black semi transparent plastic sheet	BL	BL	BL	BL	BL	BL	2023-08-04
54	Colorless transparent glass sheet	BL	BL	BL	BL	BL	BL	2023-08-04
55	Silver plastic film	BL	BL	BL	BL	BL	BL	2023-08-04
56	Silver plastic film	BL	BL	BL	BL	BL	BL	2023-08-04



Shenzhen LCS Compliance Testing Laboratory Ltd.

Add: 901, No.40 Building, Xialang Industrial Zone, Heshuikou Community, Matian Street, Guangming District, Shenzhen, Guangdong, China

Tel: +(86) 0755-82591330 | E-mail: webmaster@lcs-cert.com | Web: www.lcs-cert.com

Scan code to check authenticity



Sample No.	Sample Description	Screening Result(s)						Date of sample submission/ Resubmission
		Cd	Pb	Hg	Cr [▼]	Br [▼]		
						PBBs	PBDEs	
57	White semi transparent plastic film	BL	BL	BL	BL	BL	BL	2023-08-04
58	Grey plastic frame	BL	BL	BL	BL	BL	BL	2023-08-04
59	White body (LED)	BL	BL	BL	BL	BL	BL	2023-08-04
60	White/Yellow FPC	BL	BL	BL	BL	BL	BL	2023-08-04
61	Colorless transparent plastic board	BL	BL	BL	BL	BL	BL	2023-08-04
62	White plastic film	BL	BL	BL	BL	BL	BL	2023-08-04
63	Grey cloth adhesive	BL	BL	BL	BL	BL	BL	2023-08-04
64	Yellow semi transparent plastic tape	BL	BL	BL	BL	BL	BL	2023-08-04
65	Silver metal shell	BL	BL	BL	BL	/	/	2023-08-04
66	Black plastic tape	BL	BL	BL	BL	BL	BL	2023-08-04
67	Yellow FPC	BL	BL	BL	BL	BL	BL	2023-08-04
68	Yellow plastic wire cover	BL	BL	BL	BL	BL	BL	2023-08-04
69	Black plastic wire cover	BL	BL	BL	BL	BL	BL	2023-08-04
70	Gold metal wire card	BL	BL	BL	BL	/	/	2023-08-04
71	Beige plastic port housing	BL	BL	BL	BL	BL	BL	2023-08-04
72	Red plastic wire cover	BL	BL	BL	BL	BL	BL	2023-08-04
73	Black magnetic core (inductance)	BL	BL	BL	BL	/	/	2023-08-04
74	Black body (diode)	BL	BL	BL	BL	BL	BL	2023-08-04
75	Silver metal shell	BL	BL	BL	X	/	/	2023-08-04
76	Silver crystal oscillator	BL	BL	BL	BL	/	/	2023-08-04
77	Grey foam adhesive	BL	BL	BL	BL	BL	BL	2023-08-04
78	Black body (SMD resistor)	BL	BL	BL	BL	BL	BL	2023-08-04
79	Black body (IC)	BL	BL	BL	BL	BL	BL	2023-08-04
80	Grey core (inductance)	BL	BL	BL	BL	/	/	2023-08-04
81	Black body (IC)	BL	BL	BL	BL	BL	BL	2023-08-04
82	Green PCB board	BL	BL	BL	BL	BL	BL	2023-08-04
83	Black printed white label adhesive	BL	BL	BL	BL	BL	BL	2023-08-04
84	Silver metal shell	BL	BL	BL	X	/	/	2023-08-04
85	Silver metal shell	BL	BL	BL	BL	/	/	2023-08-04



Shenzhen LCS Compliance Testing Laboratory Ltd.

Add: 901, No.40 Building, Xialang Industrial Zone, Heshuikou Community, Matian Street, Guangming District, Shenzhen, Guangdong, China

Tel: +(86) 0755-82591330 | E-mail: webmaster@lcs-cert.com | Web: www.lcs-cert.com

Scan code to check authenticity



Sample No.	Sample Description	Screening Result(s)						Date of sample submission/ Resubmission
		Cd	Pb	Hg	Cr ^{VI}	Br ^{VI}		
						PBBs	PBDEs	
86	Black body (IC)	BL	BL	BL	BL	BL	BL	2023-08-04
87	Black body (IC)	BL	BL	BL	BL	BL	BL	2023-08-04
88	Beige plastic port housing	BL	BL	BL	BL	BL	BL	2023-08-04
89	Black plastic sheet	BL	BL	BL	BL	BL	BL	2023-08-04
90	Silver metal pin	BL	BL	BL	BL	/	/	2023-08-04
91	Black body (IC)	BL	BL	BL	BL	BL	BL	2023-08-04
92	Gold metal pins	BL	BL	BL	BL	/	/	2023-08-04
93	Silver metal pin	BL	BL	BL	BL	/	/	2023-08-04
94	Silver metal spring	BL	BL	BL	BL	/	/	2023-08-04
95	Black plastic card slot	BL	BL	BL	BL	BL	BL	2023-08-04
96	Silver metal shell	BL	BL	BL	X	/	/	2023-08-04
97	Silver metal port housing	OL	OL	BL	X	/	/	2023-08-04
98	Black plastic sheet	BL	BL	BL	BL	BL	BL	2023-08-04
99	Gold metal pin	BL	BL	BL	BL	/	/	2023-08-04
100	Black PCB board	BL	BL	BL	BL	BL	BL	2023-08-04
101	Black plastic sheet adhesive	BL	BL	BL	BL	BL	BL	2023-08-04
102	Beige plastic base	BL	BL	BL	BL	BL	BL	2023-08-04
103	Silver metal pins	BL	BL	BL	BL	/	/	2023-08-04
104	Black plastic buttons	BL	BL	BL	BL	BL	BL	2023-08-04
105	Silver metal shrapnel	BL	BL	BL	BL	/	/	2023-08-04
106	Silver metal shell	BL	BL	BL	BL	/	/	2023-08-04
107	Red plastic wire cover	BL	BL	BL	BL	BL	BL	2023-08-04
108	Red plastic plug housing	BL	BL	BL	BL	BL	BL	2023-08-24
109	Silver metal plug housing (USB)	BL	BL	BL	BL	/	/	2023-08-04
110	Gold metal pin	BL	BL	BL	BL	/	/	2023-08-04
111	Red plastic sheet	BL	BL	BL	BL	BL	BL	2023-08-04
112	Silver metal plug housing	BL	BL	BL	BL	/	/	2023-08-04
113	Green PCB board	BL	BL	BL	BL	BL	BL	2023-08-04

Note:

- Results were obtained by XRF for primary screening, and further chemical testing by ICP(for Cd, Pb, Hg), UV-Vis(for Cr(VI)) and GC-MS(for PBBs, PBDEs) are recommended to be performed, if the concentration exceeds the below warning value according to IEC 62321-3-1:2013(Unit: mg/kg).



Shenzhen LCS Compliance Testing Laboratory Ltd.

Add: 901, No.40 Building, Xialang Industrial Zone, Heshuikou Community, Matian Street, Guangming District, Shenzhen, Guangdong, China

Tel: +(86) 0755-82591330 | E-mail: webmaster@lcs-cert.com | Web: www.lcs-cert.com

Scan code to check authenticity



Element	Polymers	Metals	Composite material
Cd	$BL \leq (70-3\sigma) < X < (130+3\sigma) \leq OL$	$BL \leq (70-3\sigma) < X < (130+3\sigma) \leq OL$	$LOD < X < (150+3\sigma) \leq OL$
Pb	$BL \leq (700-3\sigma) < X < (1300+3\sigma) \leq OL$	$BL \leq (700-3\sigma) < X < (1300+3\sigma) \leq OL$	$BL \leq (500-3\sigma) < X < (1500+3\sigma) \leq OL$
Hg	$BL \leq (700-3\sigma) < X < (1300+3\sigma) \leq OL$	$BL \leq (700-3\sigma) < X < (1300+3\sigma) \leq OL$	$BL \leq (500-3\sigma) < X < (1500+3\sigma) \leq OL$
Cr	$BL \leq (700-3\sigma) < X$	$BL \leq (700-3\sigma) < X$	$BL \leq (500-3\sigma) < X$
Br	$BL \leq (300-3\sigma) < X$	N/A	$BL \leq (250-3\sigma) < X$

Remark:

- BL= Below Limit
 - OL= Over Limit
 - X= The range of needing to do further testing
 - 3σ= The reproducibility of analytical instruments
 - N/A= Not applicable
 - LOD= Detection limit
2. The XRF screening test for RoHS elements – The reading may be different to the actual content in the sample be of non-uniformity composition.
 3. The maximum permissible limit is quoted from the document RoHS Directive 2011/65/EU with amendment (EU) 2015/863.
 4. ▼=For restricted substances PBBs and PBDEs, the results show the total Br content, the restricted substance was Cr(VI), and the results showed the total Cr content.

RoHS Restricted Substances	Maximum Concentration Value (mg/kg) (by weight in homogenous materials)
Cadmium(Cd)	100
Lead(Pb)	1000
Mercury(Hg)	1000
Hexavalent Chromium(Cr(VI))	1000
Polybrominated biphenyls(PBBs)	1000
Polybrominated diphenylethers(PBDEs)	1000
Dibutyl Phthalate(DBP)	1000
Butylbenzyl Phthalate(BBP)	1000
Di-(2-ethylhexyl) Phthalate(DEHP)	1000
Diisobutyl phthalate(DIBP)	1000

Disclaimers:

This XRF Screening report is for reference purposes only. The applicant shall make its/his/her own judgment as to whether the information provided in this XRF screening report is sufficient for its/his/her purposes. The result shown in this XRF screening report will differ based on various factors, including but not limited to, the sample size, thickness, area, surface flatness, equipment parameters and matrix effect (e.g. plastic, rubber, metal, glass, ceramic etc.). Further wet chemical pre-treatment with relevant chemical equipment analysis are required to obtain quantitative data.



**B. EU RoHS Directive 2011/65/EU with amendment (EU) 2015/863 on Lead(Pb), Cadmium(Cd), Mercury(Hg), Hexavalent Chromium(Cr(VI)), PBBs, PBDEs, DBP, BBP, DEHP & DIBP content**

Test method:

Lead(Pb) & Cadmium(Cd) Content:

Refer to IEC 62321-5:2013, by acid digestion and analysis was performed by inductively coupled plasma optical emission spectrometer (ICP-OES) or atomic absorption spectrometer (AAS).

Mercury(Hg) Content:

Refer to IEC 62321-4:2013+AMD1:2017 CSV, by acid digestion and analysis was performed by inductively coupled plasma optical emission spectrometer (ICP-OES).

Hexavalent Chromium(Cr(VI)) Content:

Refer to IEC 62321-7-1:2015 or IEC 62321-7-2:2017, analysis was performed by UV-visible spectrophotometer (UV-Vis).

PBBs & PBDEs Content:

Refer to IEC 62321-6:2015, by solvent extraction and analysis was performed by gas chromatography-mass spectrometer (GC-MS).

Phthalates(DBP, BBP, DEHP & DIBP) Content:

Refer to IEC 62321-8:2017, by solvent extraction and analysis was performed by gas chromatography-mass spectrometer (GC-MS).

Test result(s):

1) Lead(Pb) & Cadmium(Cd)

Tested Item	MDL (mg/kg)	Test Result(s) (mg/kg)				Limit (mg/kg)
		(9)	(12)	(29)	(97)	
Lead(Pb) Content	5	53	33	40	27	1000

Tested Item	MDL (mg/kg)	Test Result(s) (mg/kg)			Limit (mg/kg)
		(9)	(40)	(97)	
Cadmium(Cd) Content	5	8	5	N.D.	100

2) Hexavalent Chromium(Cr(VI))(for coating on metal)

Tested Item	MDL (µg/cm ²)	Test Result(s) (µg/cm ²)					Limit (µg/cm ²)
		(9)	(12)	(19)	(29)	(40)	
Hexavalent Chromium(Cr(VI)) Content★	0.10 (LOQ)	N.D.	N.D.	N.D.	N.D.	N.D.	1000

Tested Item	MDL (µg/cm ²)	Test Result(s) (µg/cm ²)				Limit (µg/cm ²)
		(75)	(84)	(96)	(97)	
Hexavalent Chromium(Cr(VI)) Content★	0.10 (LOQ)	N.D.	N.D.	N.D.	N.D.	1000



Shenzhen LCS Compliance Testing Laboratory Ltd.

Add: 901, No.40 Building, Xialang Industrial Zone, Heshuikou Community, Matian Street, Guangming District, Shenzhen, Guangdong, China

Tel: +(86) 0755-82591330 | E-mail: webmaster@lcs-cert.com | Web: www.lcs-cert.com

Scan code to check authenticity



**3) Phthalates(DBP, BBP, DEHP &DIBP)**

Tested Item(s)	MDL (mg/kg)	Test Result(s) (mg/kg)		Limit (mg/kg)
		(107)	(108)	
Dibutyl Phthalate(DBP) Content	50	N.D.	N.D.	1000
Butylbenzyl Phthalate(BBP) Content	50	N.D.	N.D.	1000
Di-(2-ethylhexyl) Phthalate(DEHP) Content	50	N.D.	N.D.	1000
Diisobutyl phthalate(DIBP) Content	50	N.D.	N.D.	1000

Tested Item(s)	MDL (mg/kg)	Test Result(s) (mg/kg)	Limit (mg/kg)
		(2+3+4+5+6+7)	
Dibutyl Phthalate(DBP) Content	50	N.D.	1000
Butylbenzyl Phthalate(BBP) Content	50	N.D.	1000
Di-(2-ethylhexyl) Phthalate(DEHP) Content	50	N.D.	1000
Diisobutyl phthalate(DIBP) Content	50	N.D.	1000

Tested Item(s)	MDL (mg/kg)	Test Result(s) (mg/kg)	Limit (mg/kg)
		(8+10+13+15+18+20)	
Dibutyl Phthalate(DBP) Content	50	N.D.	1000
Butylbenzyl Phthalate(BBP) Content	50	N.D.	1000
Di-(2-ethylhexyl) Phthalate(DEHP) Content	50	N.D.	1000
Diisobutyl phthalate(DIBP) Content	50	N.D.	1000

Tested Item(s)	MDL (mg/kg)	Test Result(s) (mg/kg)	Limit (mg/kg)
		(23+28+30+31+33+34)	
Dibutyl Phthalate(DBP) Content	50	N.D.	1000
Butylbenzyl Phthalate(BBP) Content	50	N.D.	1000
Di-(2-ethylhexyl) Phthalate(DEHP) Content	50	N.D.	1000
Diisobutyl phthalate(DIBP) Content	50	N.D.	1000





Tested Item(s)	MDL (mg/kg)	Test Result(s) (mg/kg)	Limit (mg/kg)
		(37+38+39+41+42+43)	
Dibutyl Phthalate(DBP) Content	50	N.D.	1000
Butylbenzyl Phthalate(BBP) Content	50	N.D.	1000
Di-(2-ethylhexyl) Phthalate(DEHP) Content	50	N.D.	1000
Diisobutyl phthalate(DIBP) Content	50	N.D.	1000

Tested Item(s)	MDL (mg/kg)	Test Result(s) (mg/kg)	Limit (mg/kg)
		(46+47+49+50+51+52)	
Dibutyl Phthalate(DBP) Content	50	N.D.	1000
Butylbenzyl Phthalate(BBP) Content	50	N.D.	1000
Di-(2-ethylhexyl) Phthalate(DEHP) Content	50	N.D.	1000
Diisobutyl phthalate(DIBP) Content	50	N.D.	1000

Tested Item(s)	MDL (mg/kg)	Test Result(s) (mg/kg)	Limit (mg/kg)
		(53+54+55+56+57+58)	
Dibutyl Phthalate(DBP) Content	50	N.D.	1000
Butylbenzyl Phthalate(BBP) Content	50	N.D.	1000
Di-(2-ethylhexyl) Phthalate(DEHP) Content	50	N.D.	1000
Diisobutyl phthalate(DIBP) Content	50	N.D.	1000

Tested Item(s)	MDL (mg/kg)	Test Result(s) (mg/kg)	Limit (mg/kg)
		(59+60+61+62+63+64)	
Dibutyl Phthalate(DBP) Content	50	N.D.	1000
Butylbenzyl Phthalate(BBP) Content	50	N.D.	1000
Di-(2-ethylhexyl) Phthalate(DEHP) Content	50	N.D.	1000
Diisobutyl phthalate(DIBP) Content	50	N.D.	1000





Tested Item(s)	MDL (mg/kg)	Test Result(s) (mg/kg)	Limit (mg/kg)
		(66+67+68+69+71+72)	
Dibutyl Phthalate(DBP) Content	50	N.D.	1000
Butylbenzyl Phthalate(BBP) Content	50	N.D.	1000
Di-(2-ethylhexyl) Phthalate(DEHP) Content	50	N.D.	1000
Diisobutyl phthalate(DIBP) Content	50	N.D.	1000

Tested Item(s)	MDL (mg/kg)	Test Result(s) (mg/kg)	Limit (mg/kg)
		(74+77+78+79+81+82)	
Dibutyl Phthalate(DBP) Content	50	N.D.	1000
Butylbenzyl Phthalate(BBP) Content	50	N.D.	1000
Di-(2-ethylhexyl) Phthalate(DEHP) Content	50	N.D.	1000
Diisobutyl phthalate(DIBP) Content	50	N.D.	1000

Tested Item(s)	MDL (mg/kg)	Test Result(s) (mg/kg)	Limit (mg/kg)
		(83+86+87+88+89+91)	
Dibutyl Phthalate(DBP) Content	50	N.D.	1000
Butylbenzyl Phthalate(BBP) Content	50	N.D.	1000
Di-(2-ethylhexyl) Phthalate(DEHP) Content	50	N.D.	1000
Diisobutyl phthalate(DIBP) Content	50	N.D.	1000

Tested Item(s)	MDL (mg/kg)	Test Result(s) (mg/kg)	Limit (mg/kg)
		(95+98+100+101+102+104)	
Dibutyl Phthalate(DBP) Content	50	N.D.	1000
Butylbenzyl Phthalate(BBP) Content	50	N.D.	1000
Di-(2-ethylhexyl) Phthalate(DEHP) Content	50	N.D.	1000
Diisobutyl phthalate(DIBP) Content	50	N.D.	1000





Tested Item(s)	MDL (mg/kg)	Test Result(s) (mg/kg)	Limit (mg/kg)
		(111+113)	
Dibutyl Phthalate(DBP) Content	50	N.D.	1000
Butylbenzyl Phthalate(BBP) Content	50	N.D.	1000
Di-(2-ethylhexyl) Phthalate(DEHP) Content	50	N.D.	1000
Diisobutyl phthalate(DIBP) Content	50	N.D.	1000

Note:

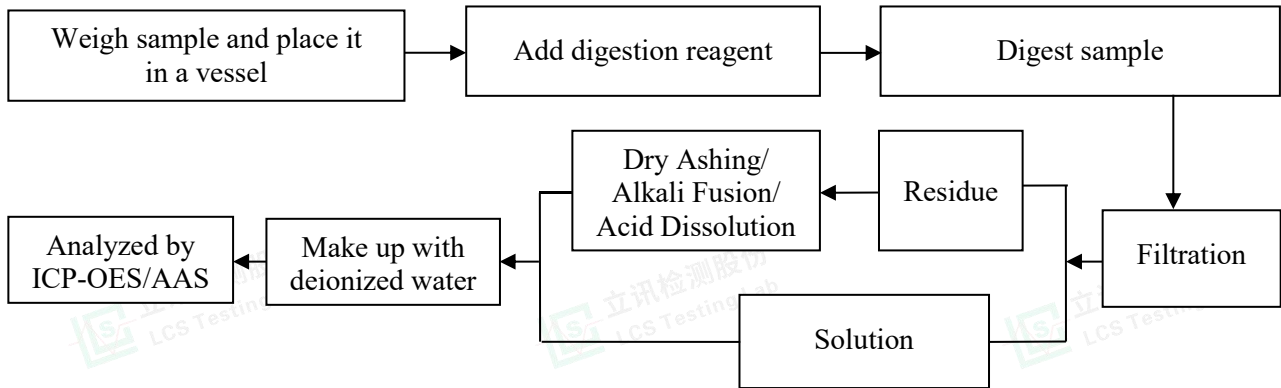
- MDL = Method Detection Limit
- N.D. = Not Detected (<MDL or LOQ)
- mg= milligram
- LOQ = Limit Of Quantification, The LOQ of Hexavalent chromium is 0.10 $\mu\text{g}/\text{cm}^2$
- ★ = a. The sample is positive for Cr(VI) if the Cr(VI) concentration is greater than 0.13 $\mu\text{g}/\text{cm}^2$. The sample coating is considered to contain Cr(VI).
b. The sample is negative for Cr(VI) if Cr(VI) is N.D.(concentration less than 0.10 $\mu\text{g}/\text{cm}^2$). The sample coating is considered a non- Cr(VI) based coating.
c. The result between 0.10 $\mu\text{g}/\text{cm}^2$ and 0.13 $\mu\text{g}/\text{cm}^2$ is considered to be inconclusive, unavoidable coating variations may influence the determination.
- Information on storage conditions and production date of the tested samples is unavailable and thus Cr(VI) results represent status of the sample at the time of testing.
- According to customer's requirement, only the appointed materials have been tested.



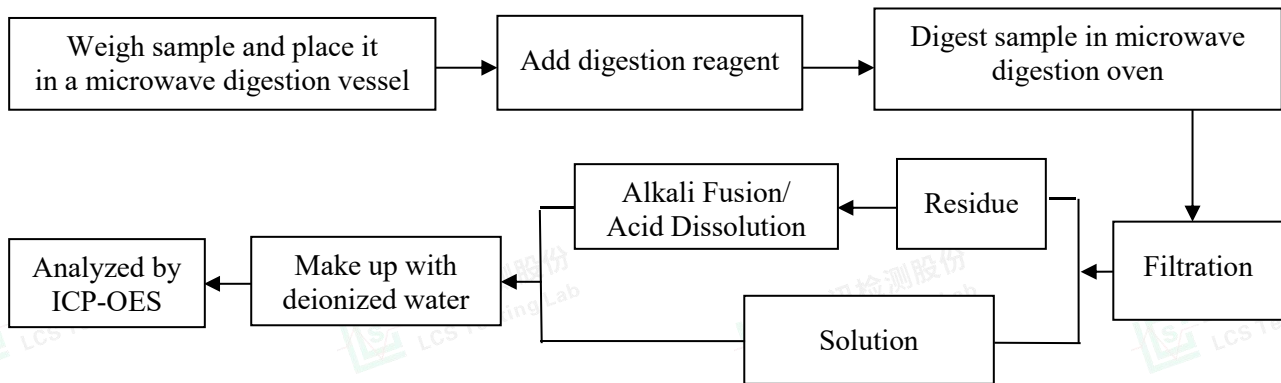


Test Process

1. Lead(Pb) & Cadmium(Cd): IEC 62321-5:2013

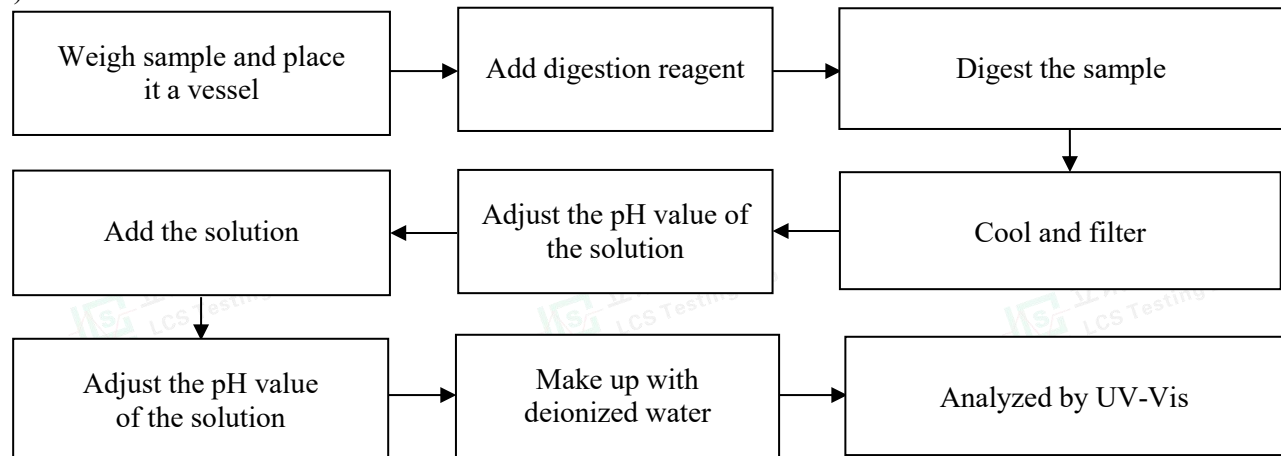


2. Mercury(Hg): IEC 62321-4:2013+AMD1:2017 CSV



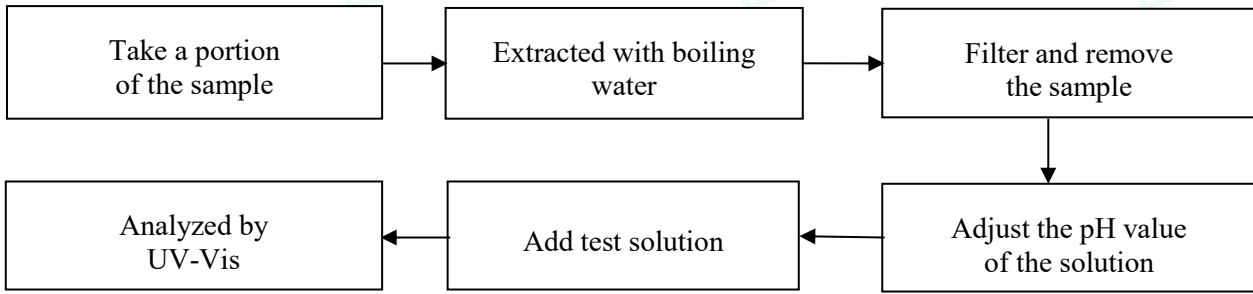
3. Hexavalent Chromium(Cr(VI))

1) IEC 62321-7-2:2017

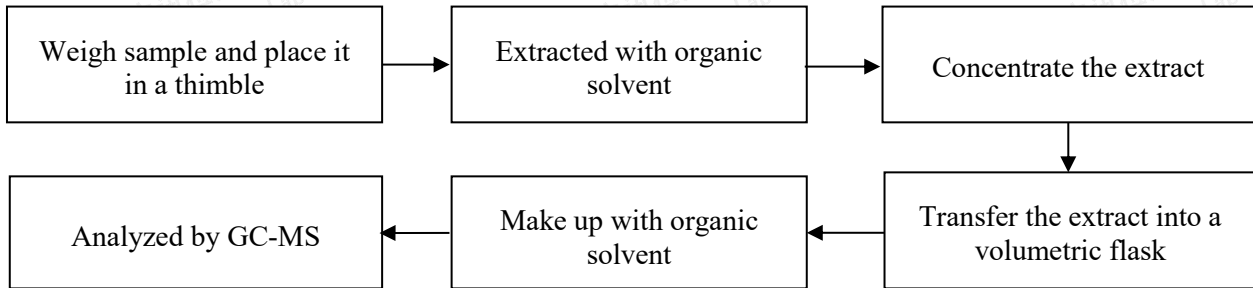




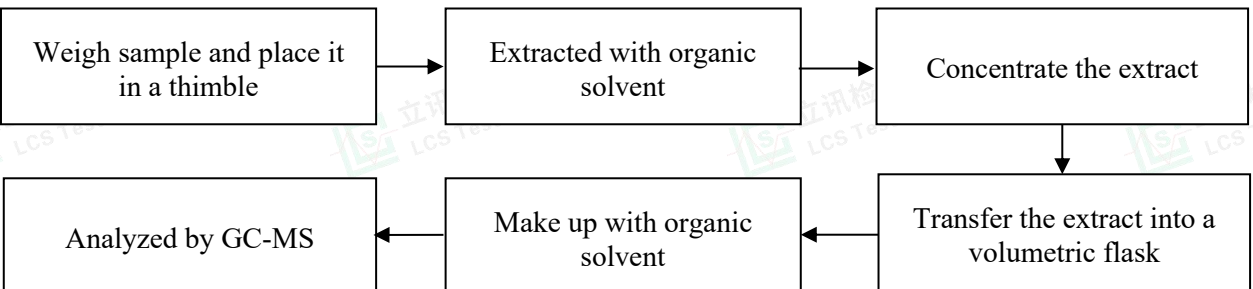
2) IEC 62321-7-1:2015



4. Polybrominated Biphenyls(PBBs) & Polybrominated Diphenyl Ethers(PBDEs) : IEC 62321-6:2015

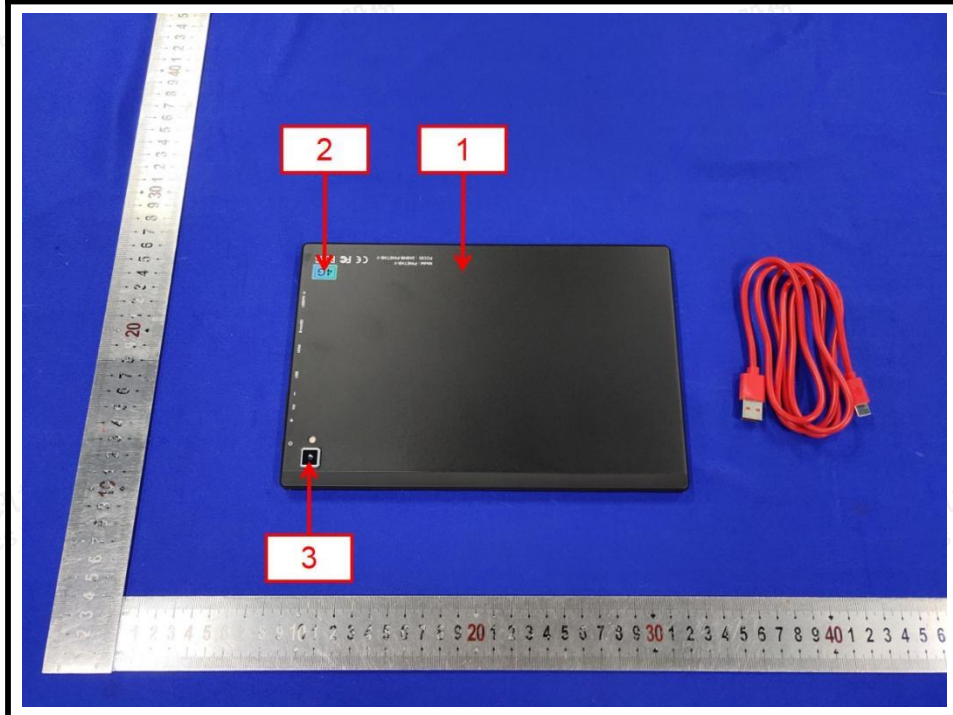
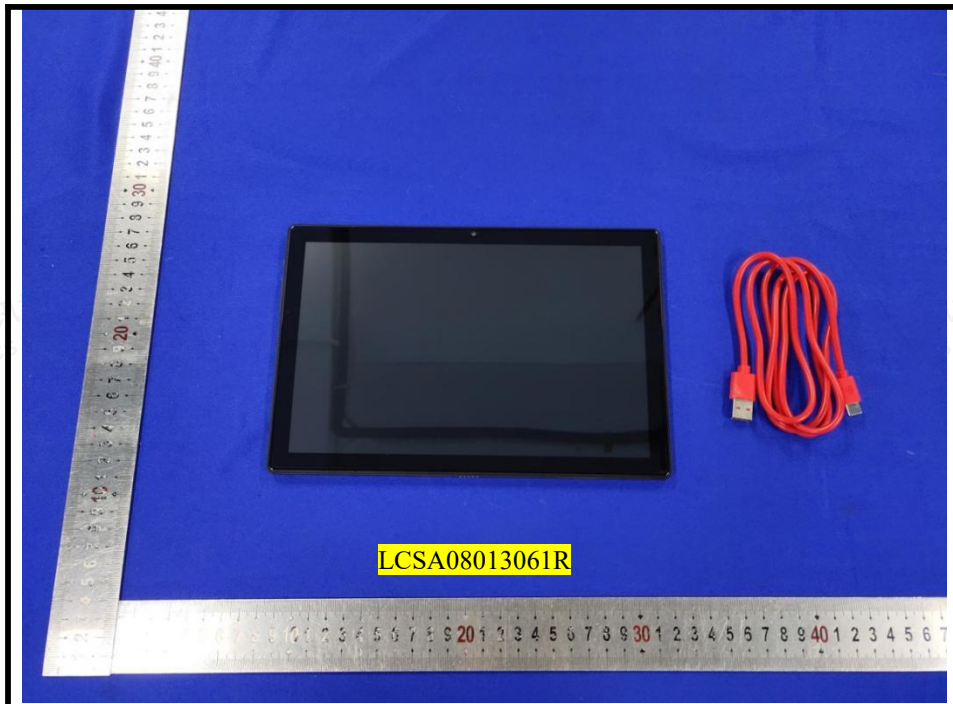


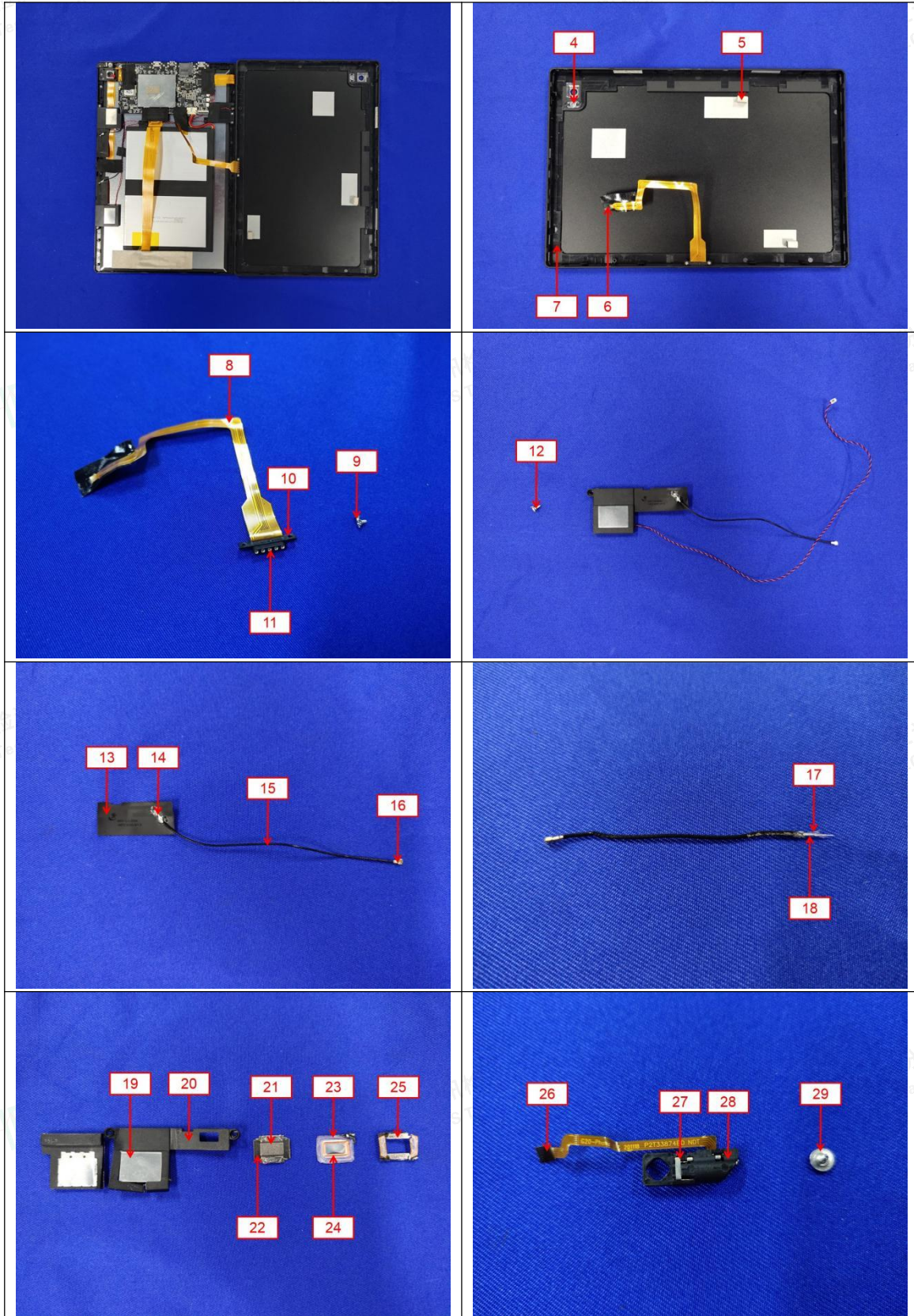
5. Phthalates(DBP, BBP, DEHP & DIBP) : IEC 62321-8:2017

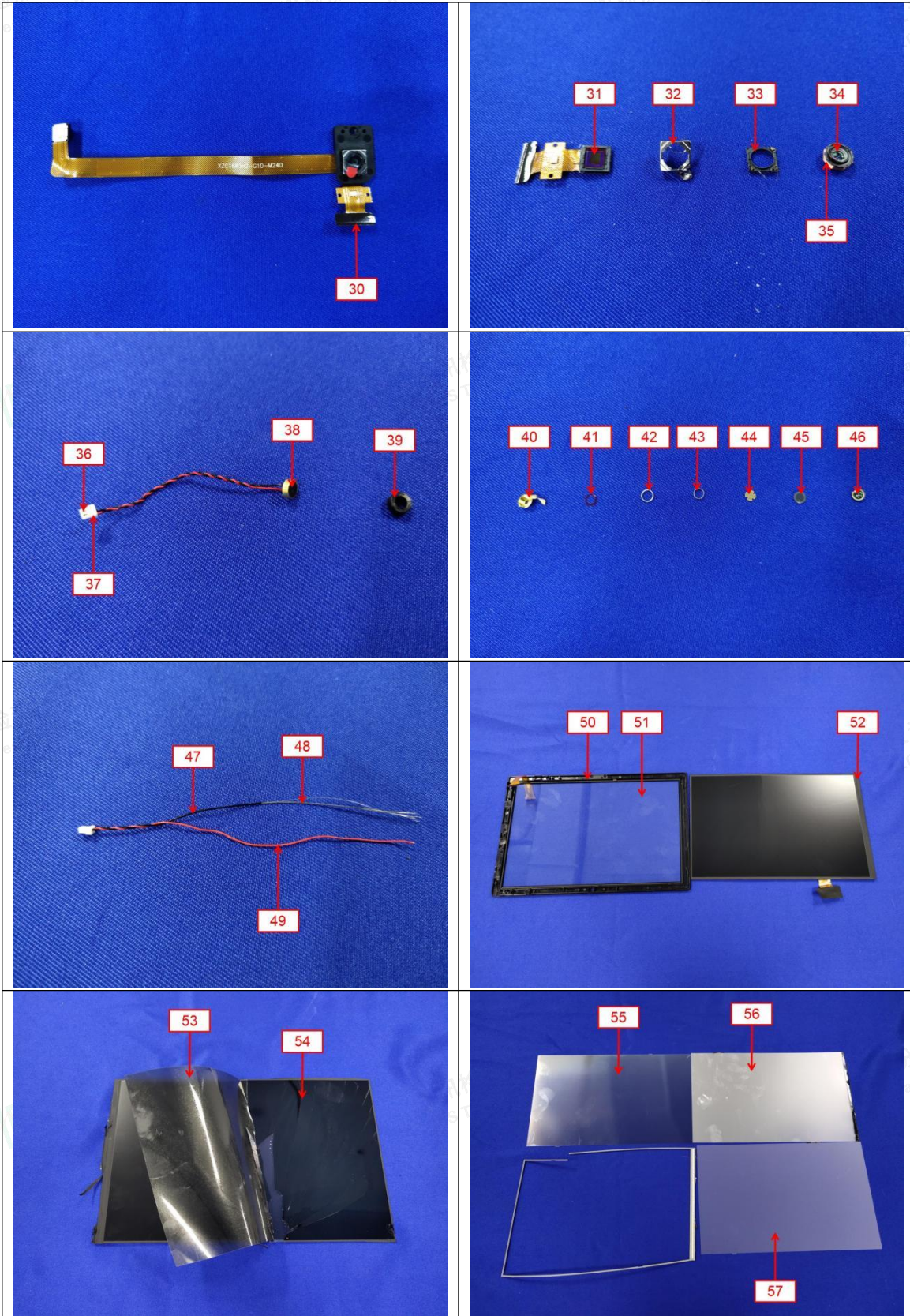


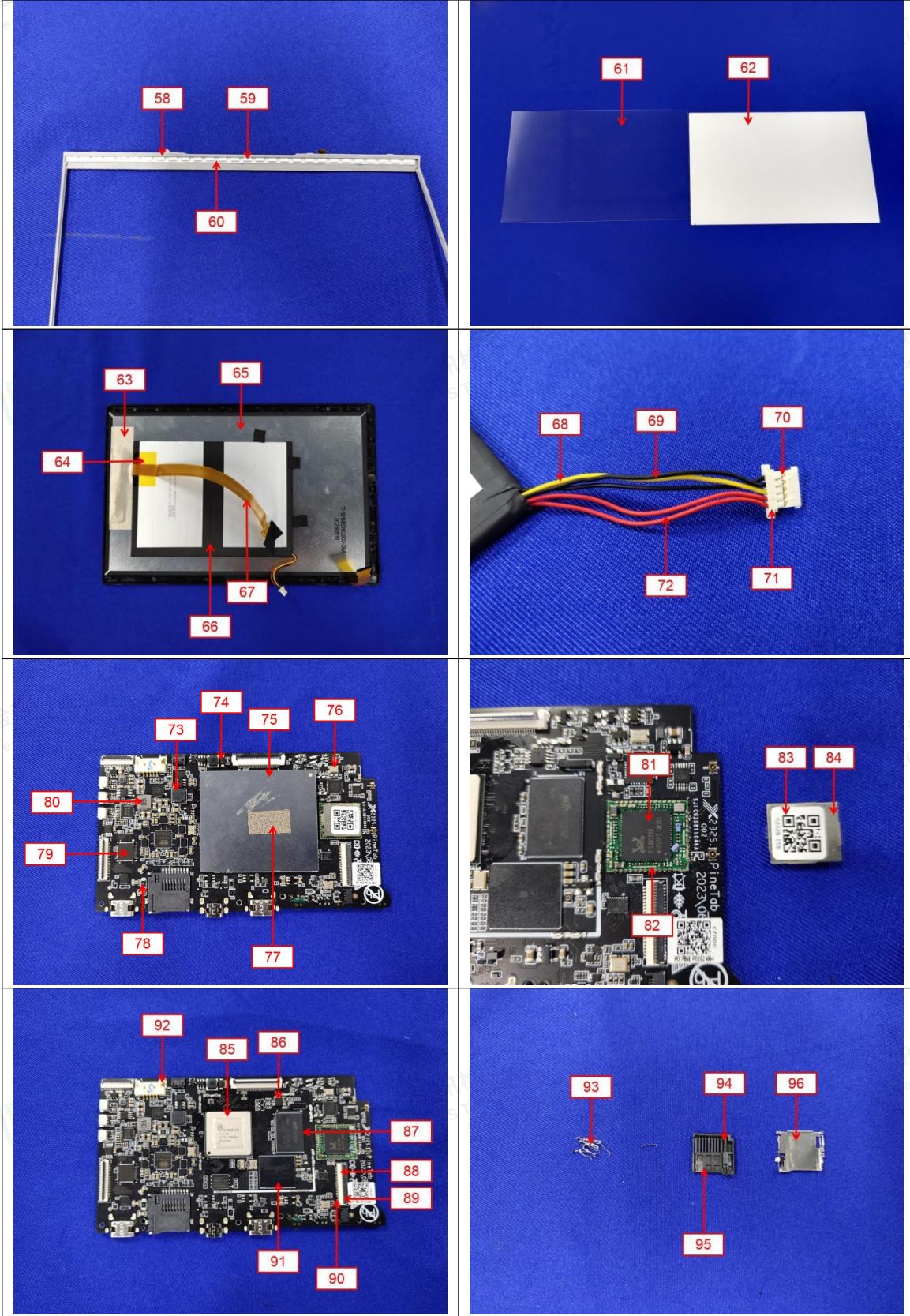


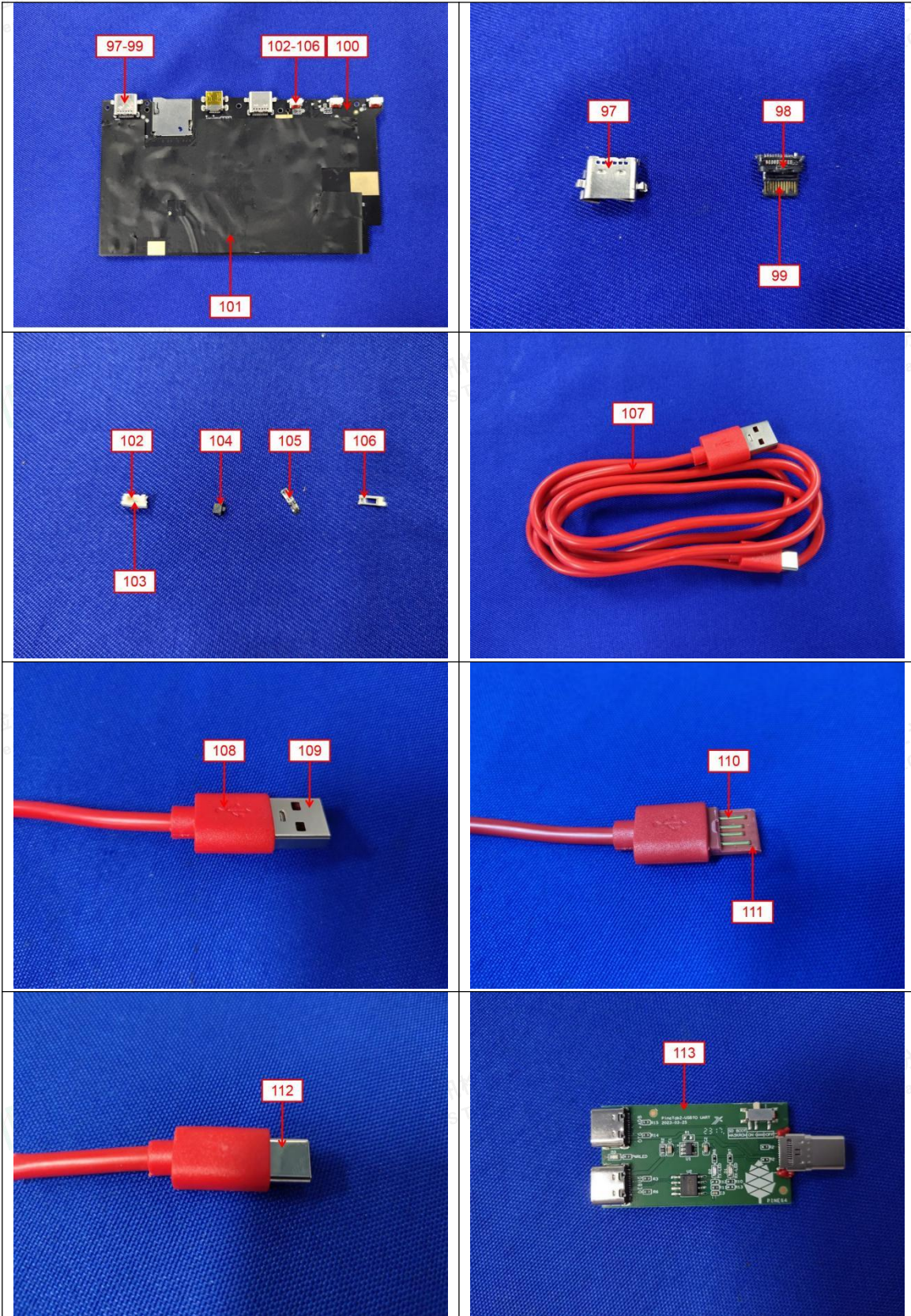
The photo(s) of the sample

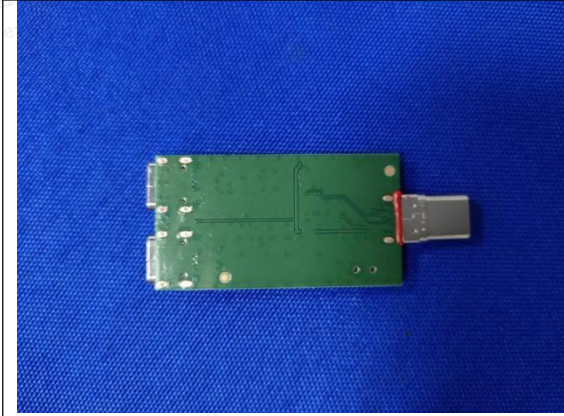












Blank

Statement:

1. The test report is invalid without the signature of the approver and the special seal for the company's report;
2. The company name, address and sample information shown on the report were provided by the applicant who should be responsible for the authenticity which are not verified by LCS;
3. The test results in this report are only responsible for the tested samples;
4. Without written approval of LCS, this report can't be reproduced except in full;
5. In case of any discrepancy between the corresponding Chinese and English contents in the test report, the Chinese version shall prevail.

*** End of Report ***

