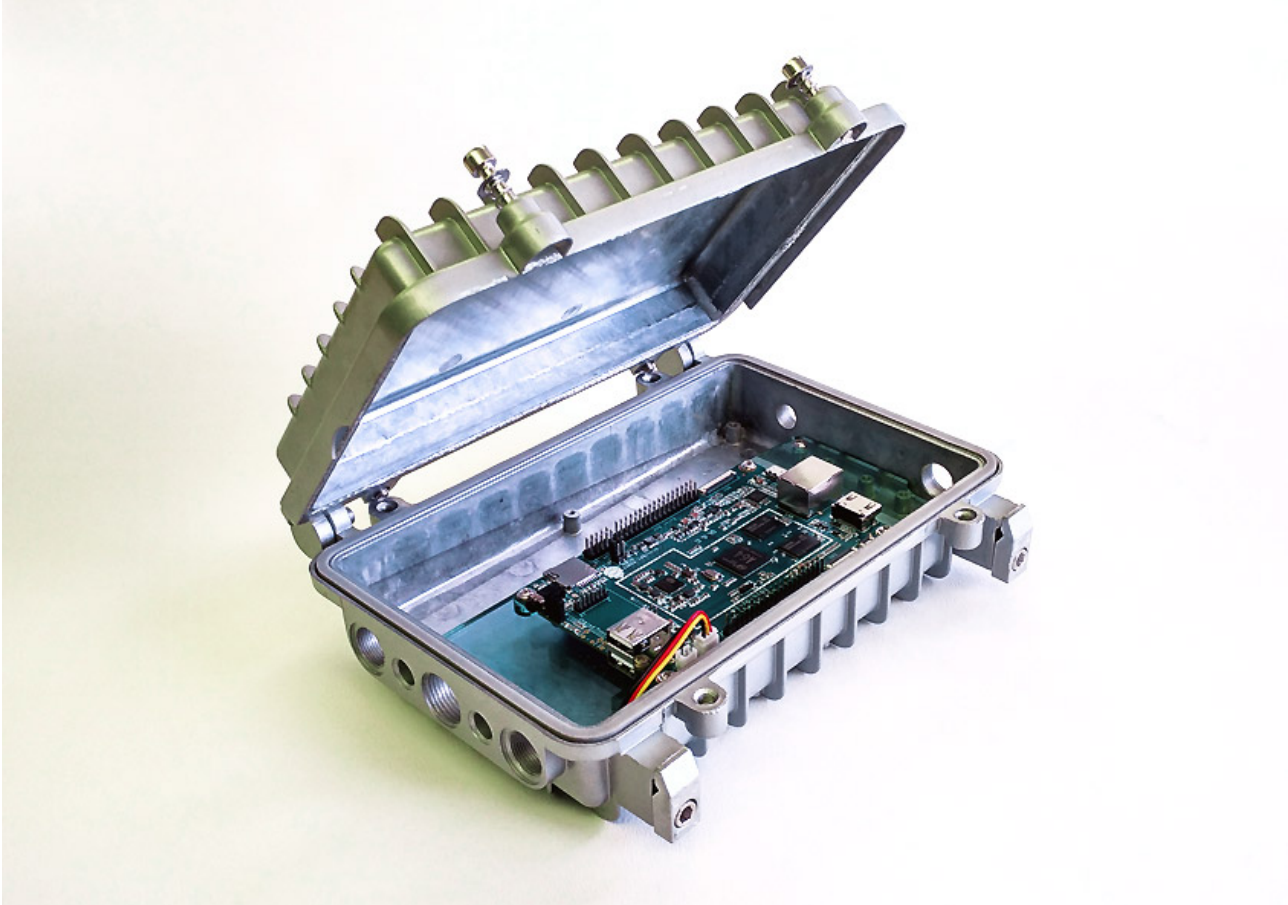


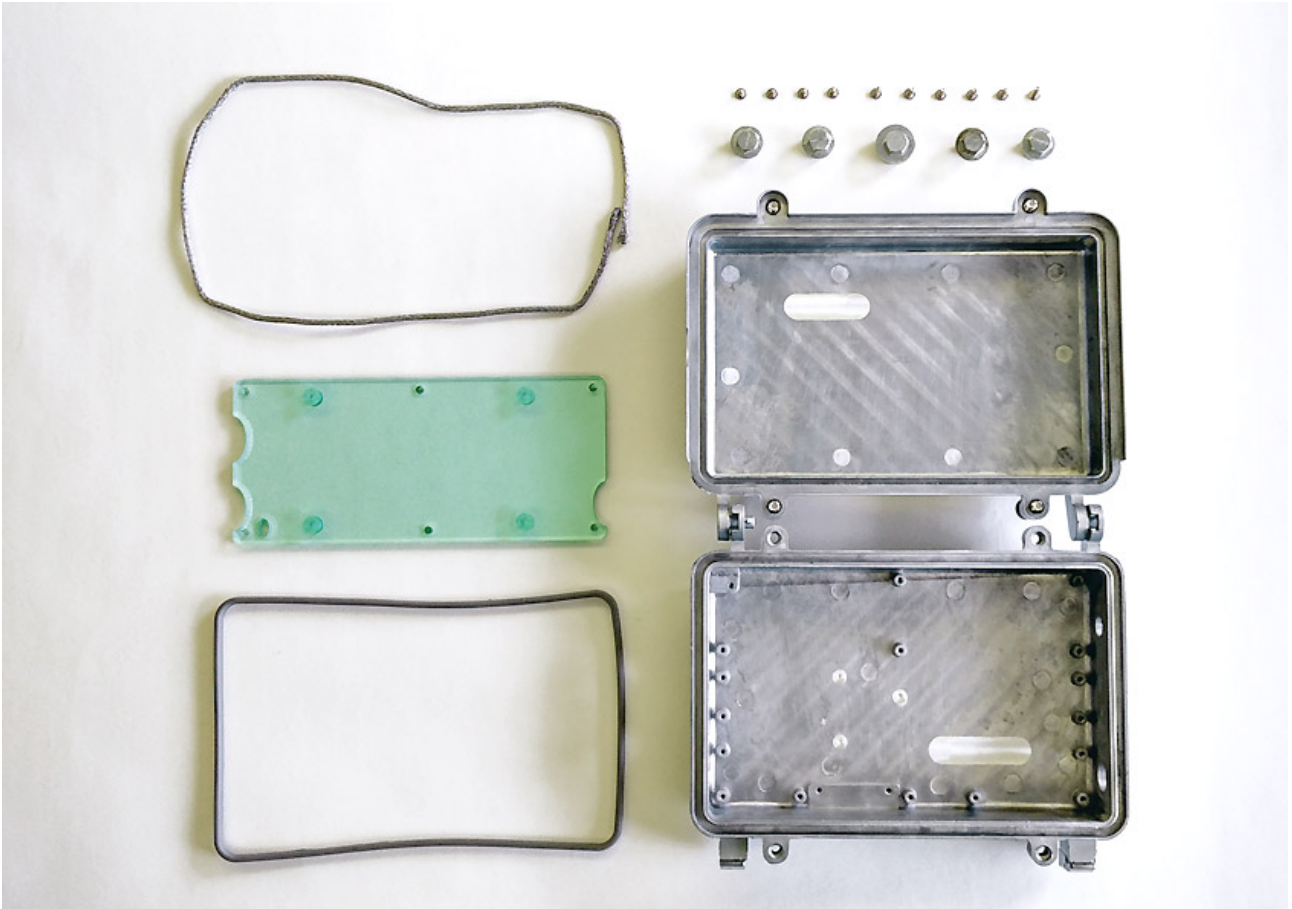
Assembly Aluminum Waterproof Enclosure of PINE A64

Description

This is the overview of the assembly of PINE A64 to aluminum casing before it has been locked up with screws.



■ Packaging and Contents



Package Contents:

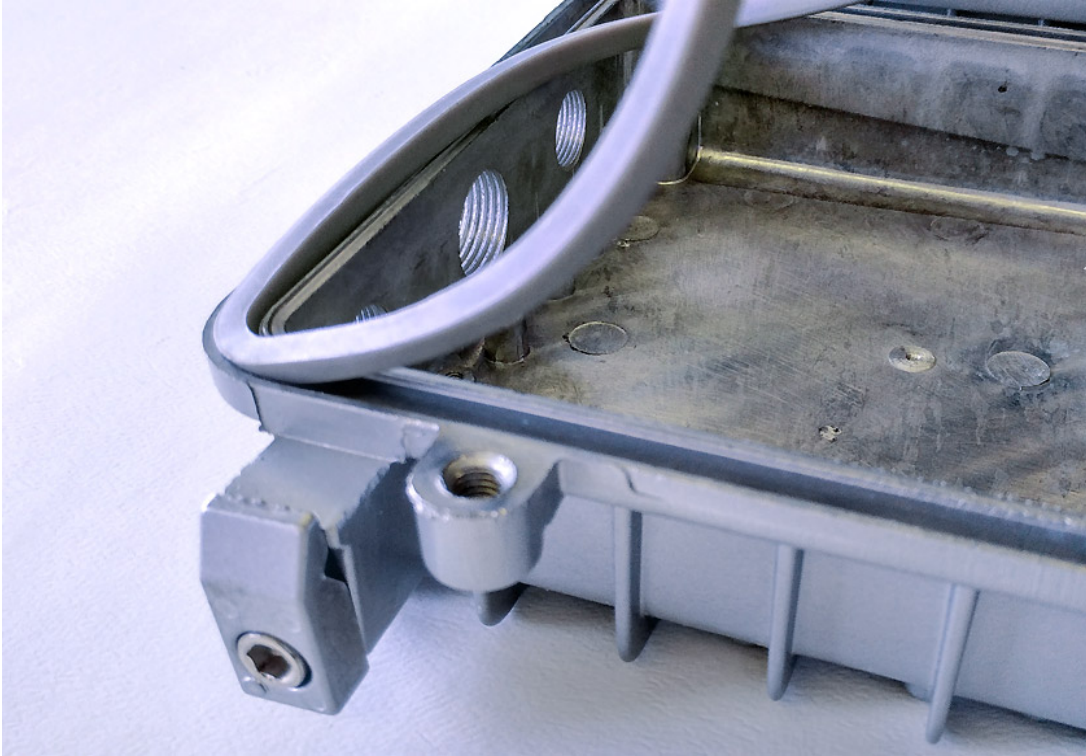
- 1 x Aluminum Waterproof Enclosure
- 1 x Molded outer Silicone gasket
- 1 x Acrylic Glass
- 1 x Wire-mesh with sponge rubber gasket
- 6 x Machine Screws
- 4 x Self Tapping Screw
- 5 x Bolts/Nuts (with 3 size categories)

| Assembly Aluminum Waterproof Enclosure of PINE A64

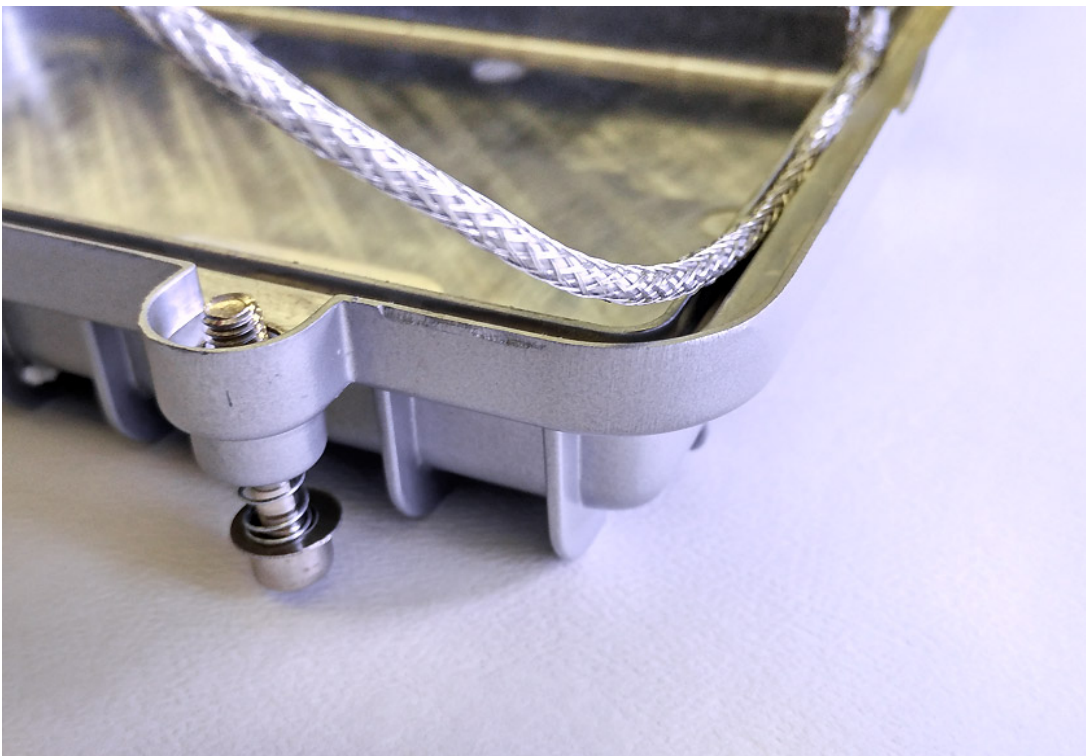
STEP 01 Insert the molded outer silicone gasket on the base of aluminum enclosure.



Make sure the curved surface of the molded outer silicone gasket is faced downwards.



STEP 02 Insert the wire-mesh with sponge rubber gasket on the cover of aluminum enclosure.



STEP 03 This is the overview of the aluminum waterproof enclosure with molded outer silicone gasket and wire-mesh with sponge rubber gasket inserted.



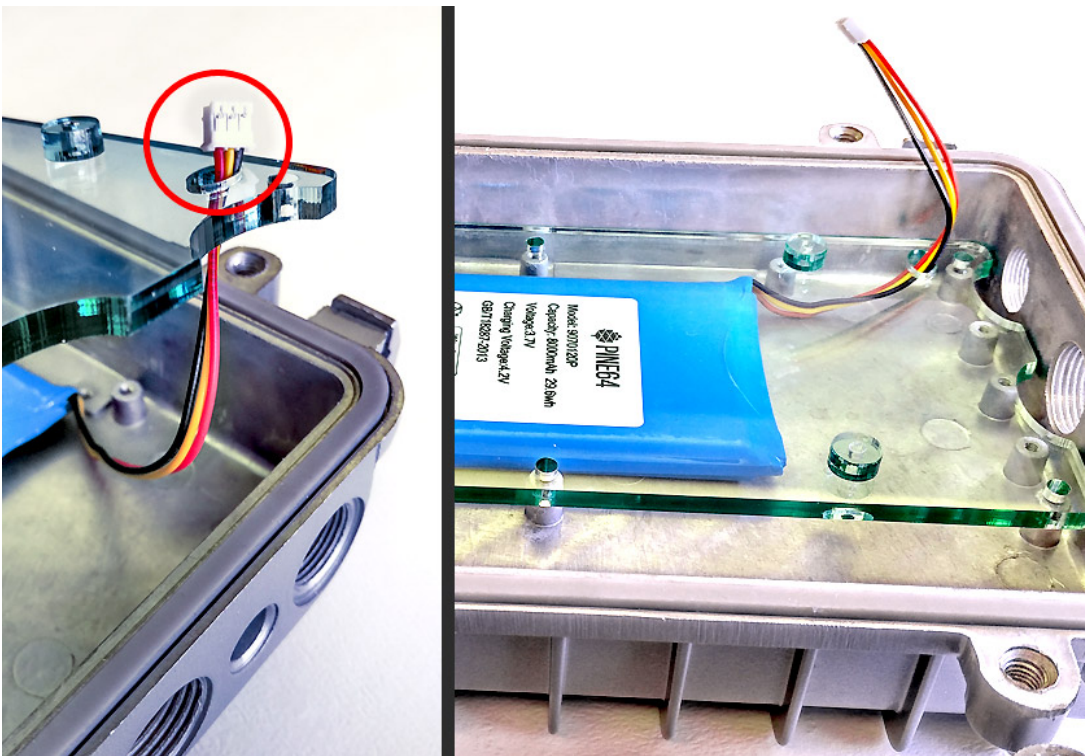
STEP 04 Stick your LiPo battery on the Aluminum Waterproof Enclosure (base) with double-sided tape.




This is optional as it depends on the needs on the usage of the battery.

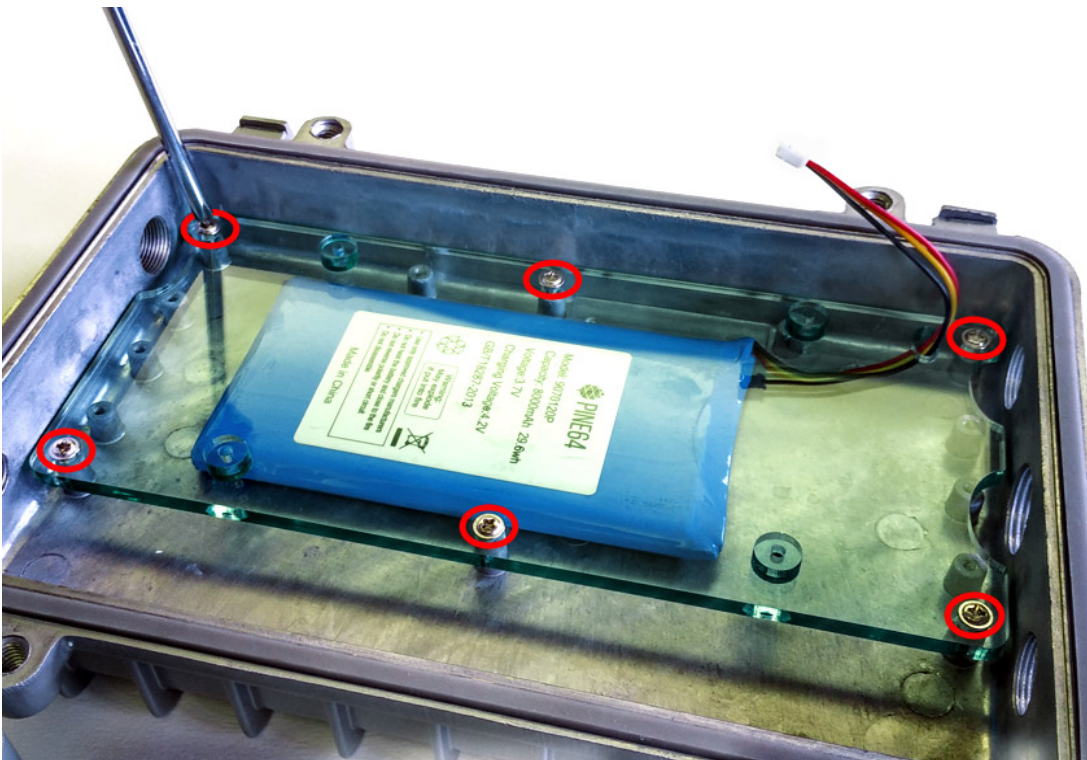
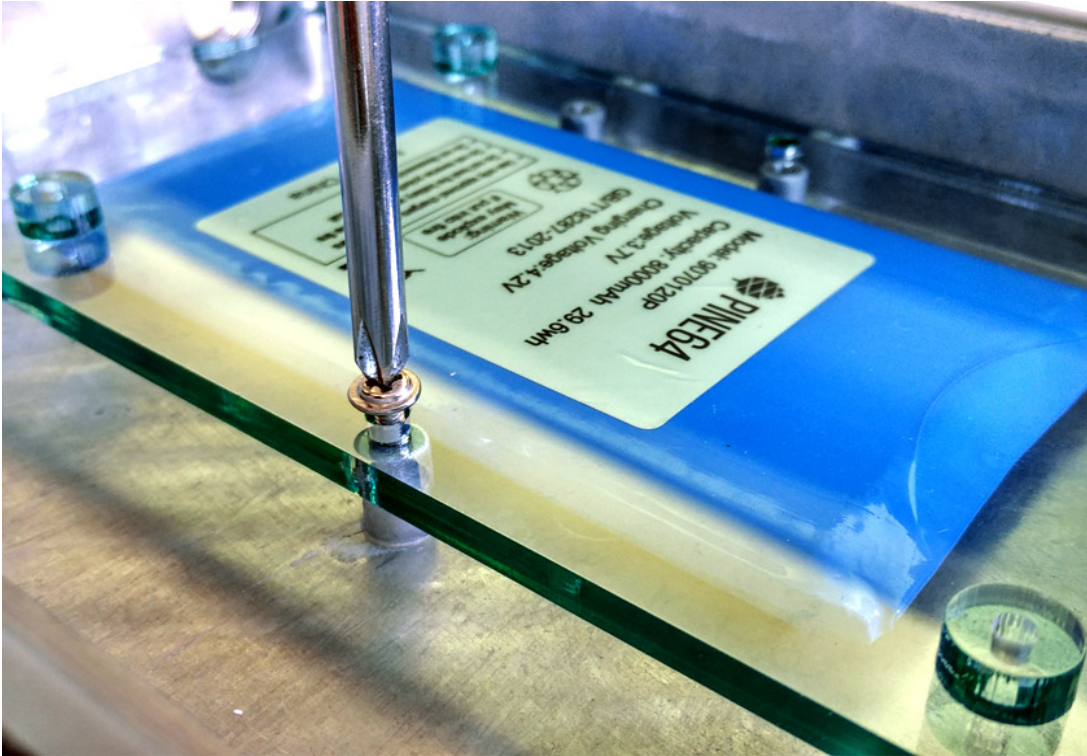


STEP 05 With the acrylic glass on top of the LiPo battery, draw the balance wire of the LiPo battery through/out from the hole of the acrylic glass.

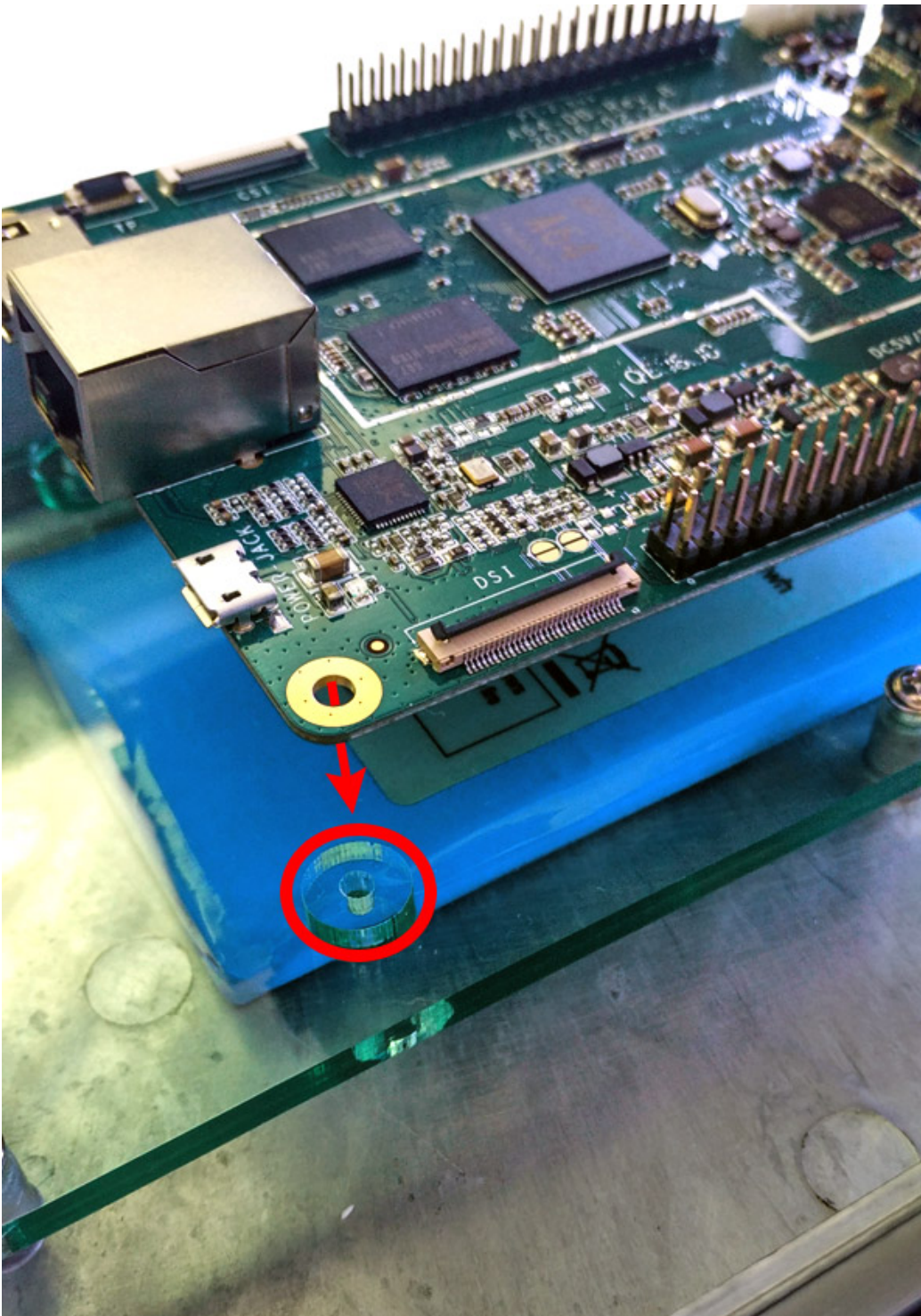


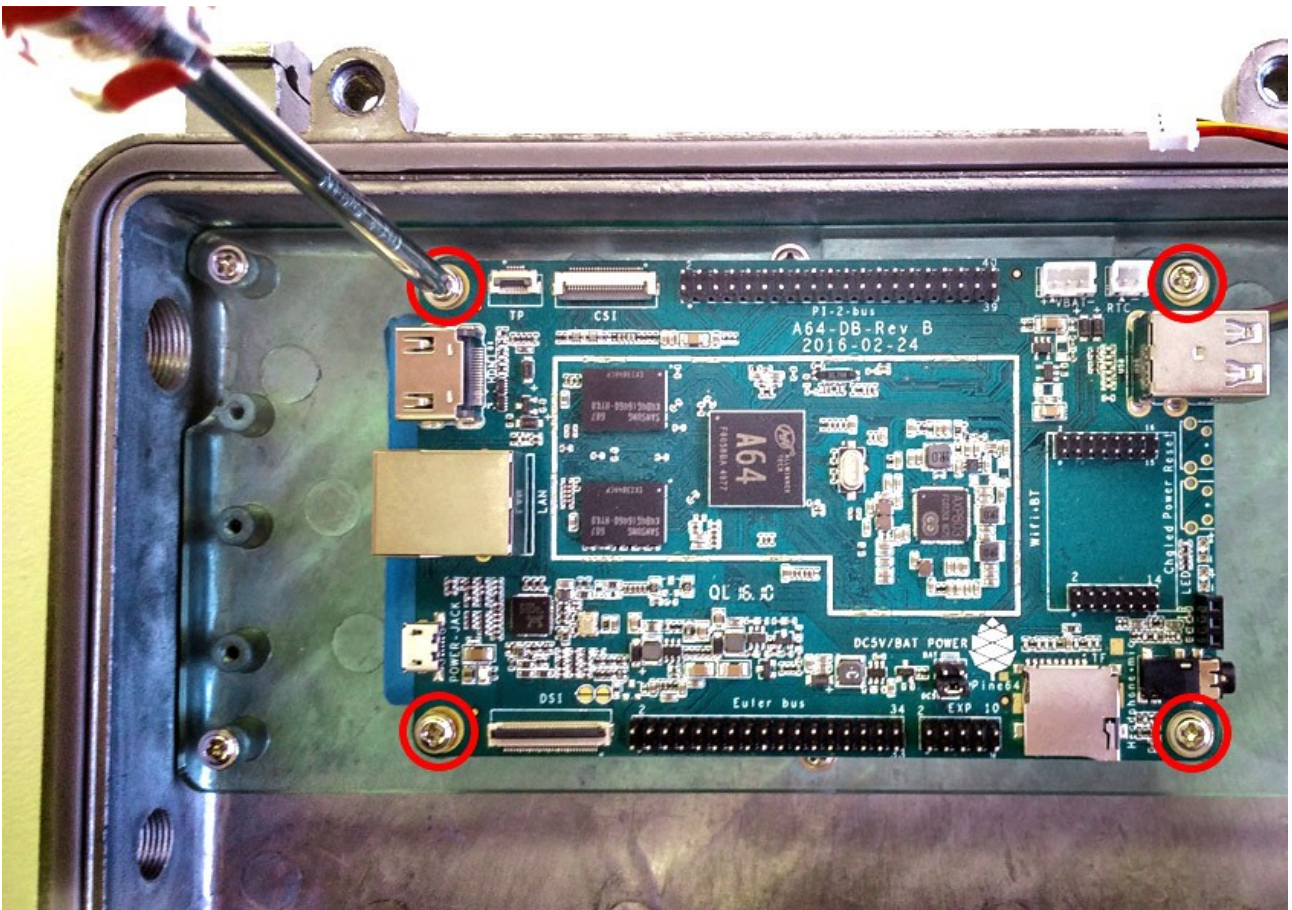
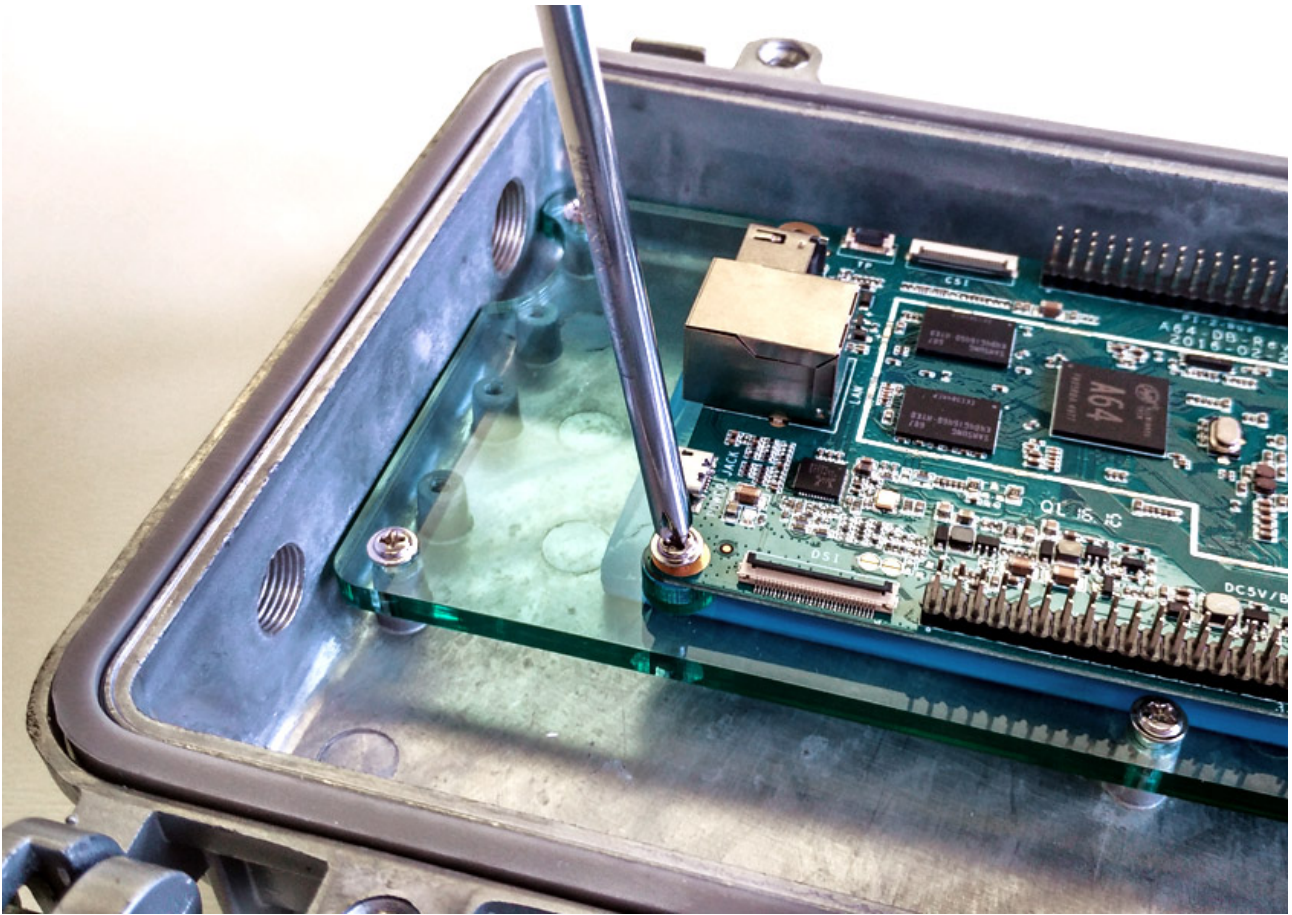
STEP 06 To lock the acrylic glass securely, screw the glass to the base of the aluminum enclosure.

 There will be a total number of 6 machine screws.

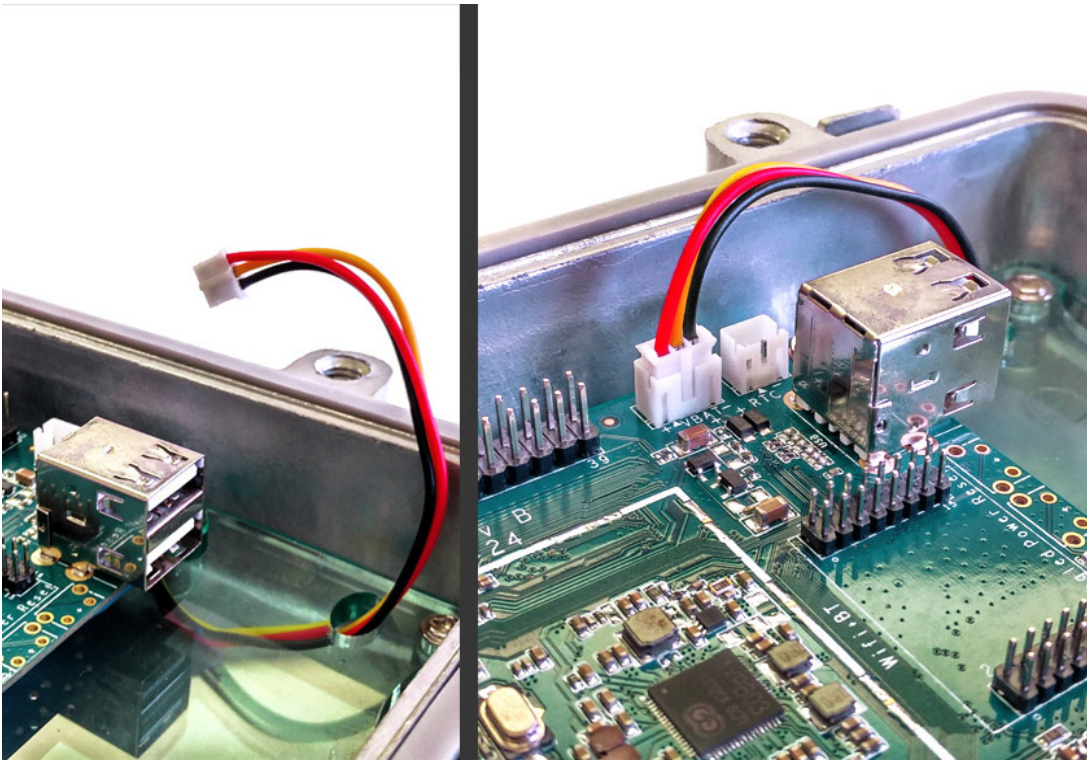


STEP 07 With PINE A64 on top of the acrylic glass, secure the PINE A64 with 4 self tapping screws at the corner.





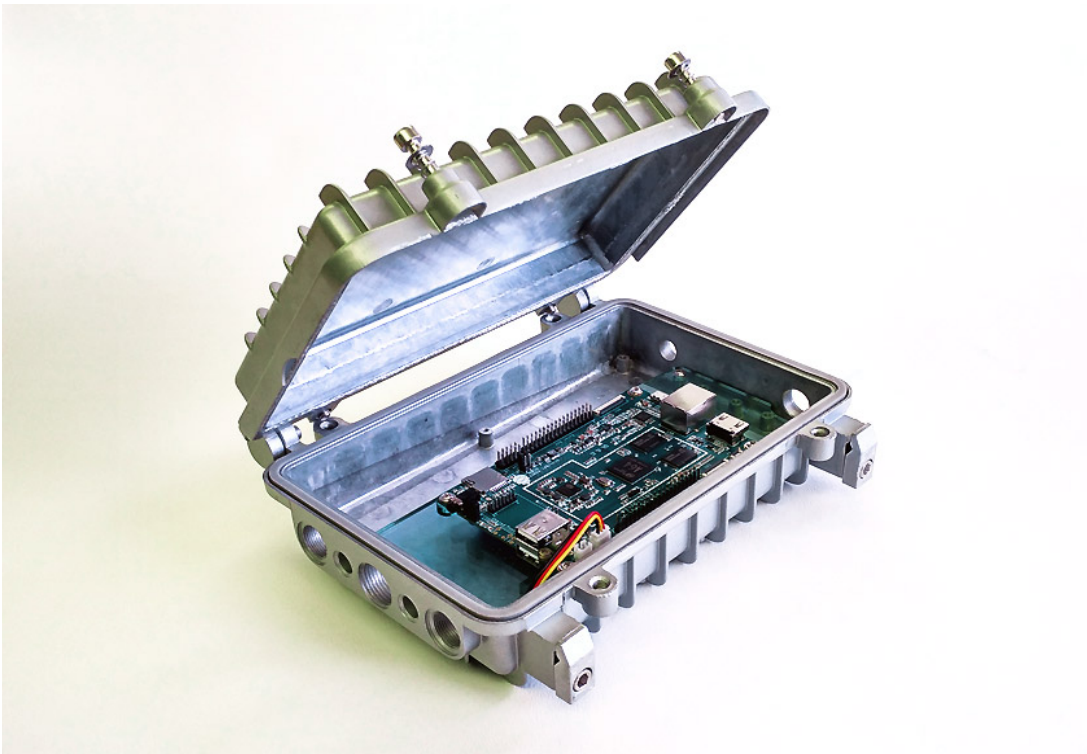
STEP 08 Connect the balance wire of the LiPo battery that has been drawn out to the balance connector on PINE A64.



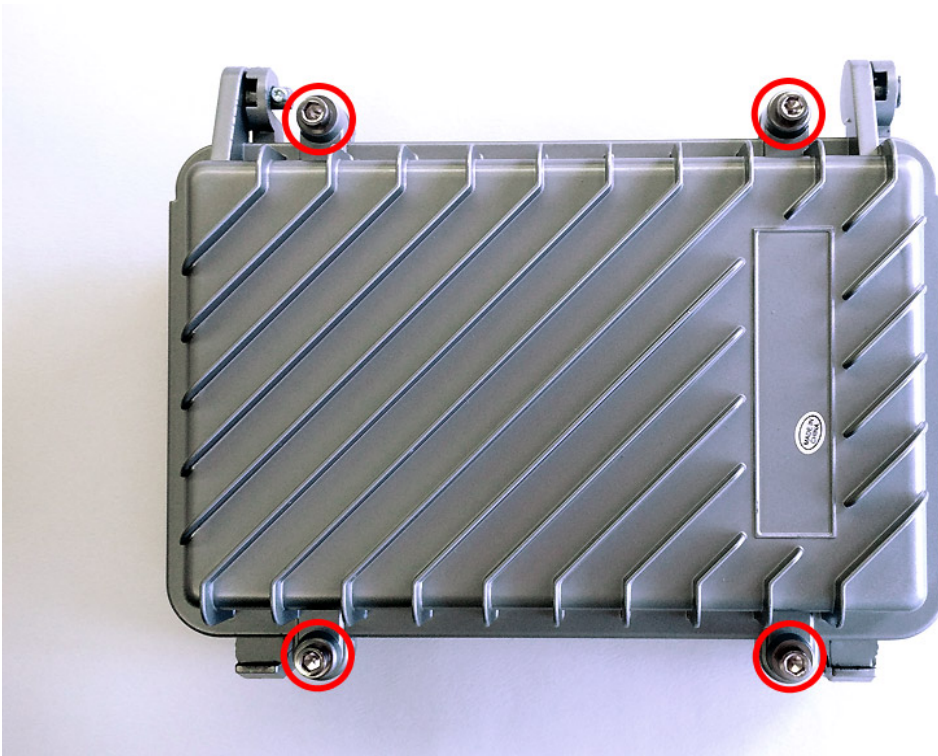
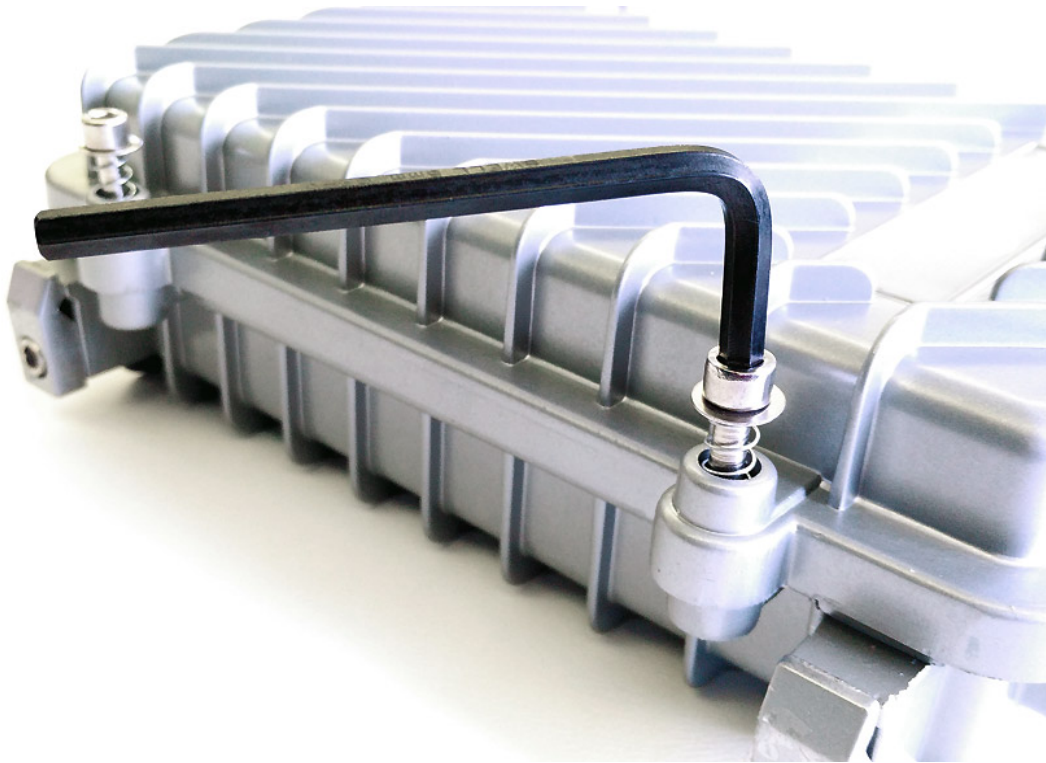
STEP 09 Now, assembly the case and the base of the aluminum waterproof enclosure.



Captive cover assembly screws are located outside the sealing area.



Join the base of the aluminum waterproof enclosure to the case with four captive cover screws using the hex key (Allen key)



STEP 10 To protect the application from water, oil, dust or other contaminants, lock the hole at both ends of the enclosure with the bolts accordingly to their size.



Congratulations! You have successfully assembly the Aluminum Waterproof Enclosure of PINE A64! You are ready to go now!

