

Installing ABS Enclosure Case for PINE A64

Description

This is the overview of the installation of ABS Enclosure Case for PINE A64.



- 1. There is no open hole to access microSD from outside.*
- 2. Current Z-Wave module cannot fit into the casing due to height concern.*



■ Packaging and Contents



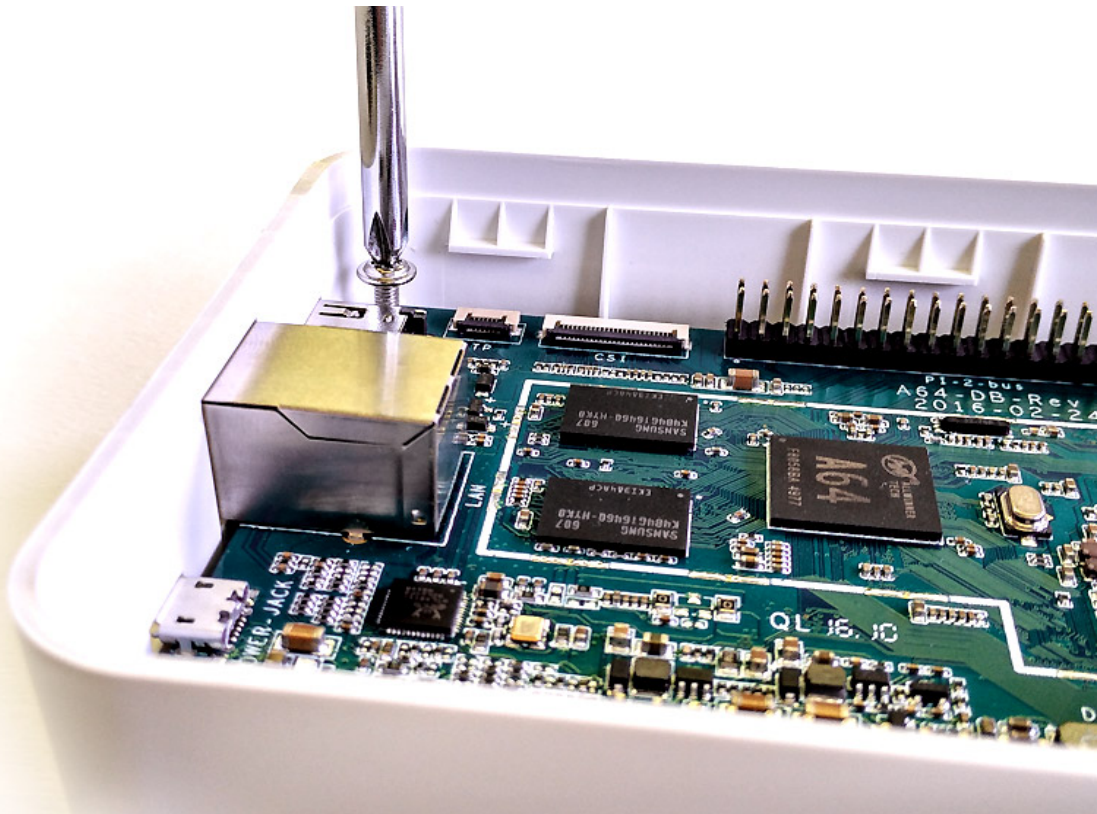
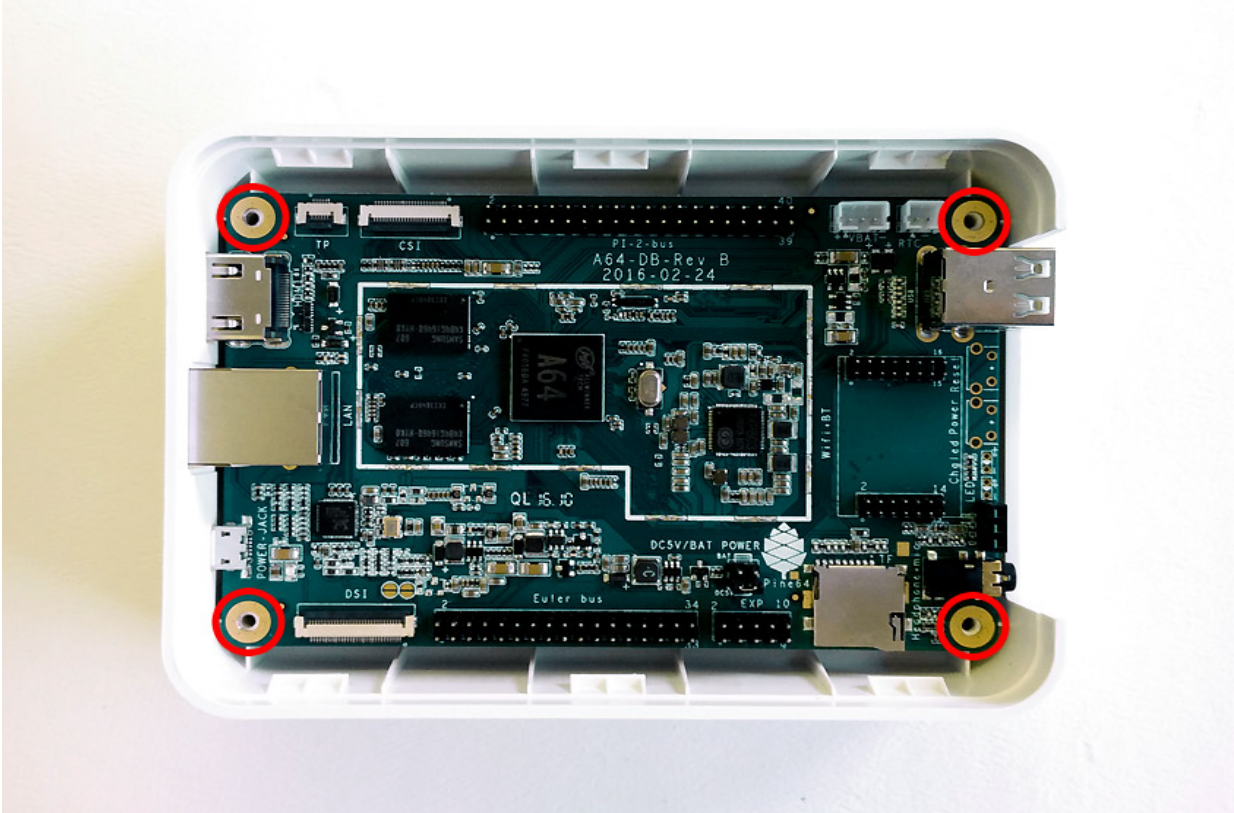
Package Contents:

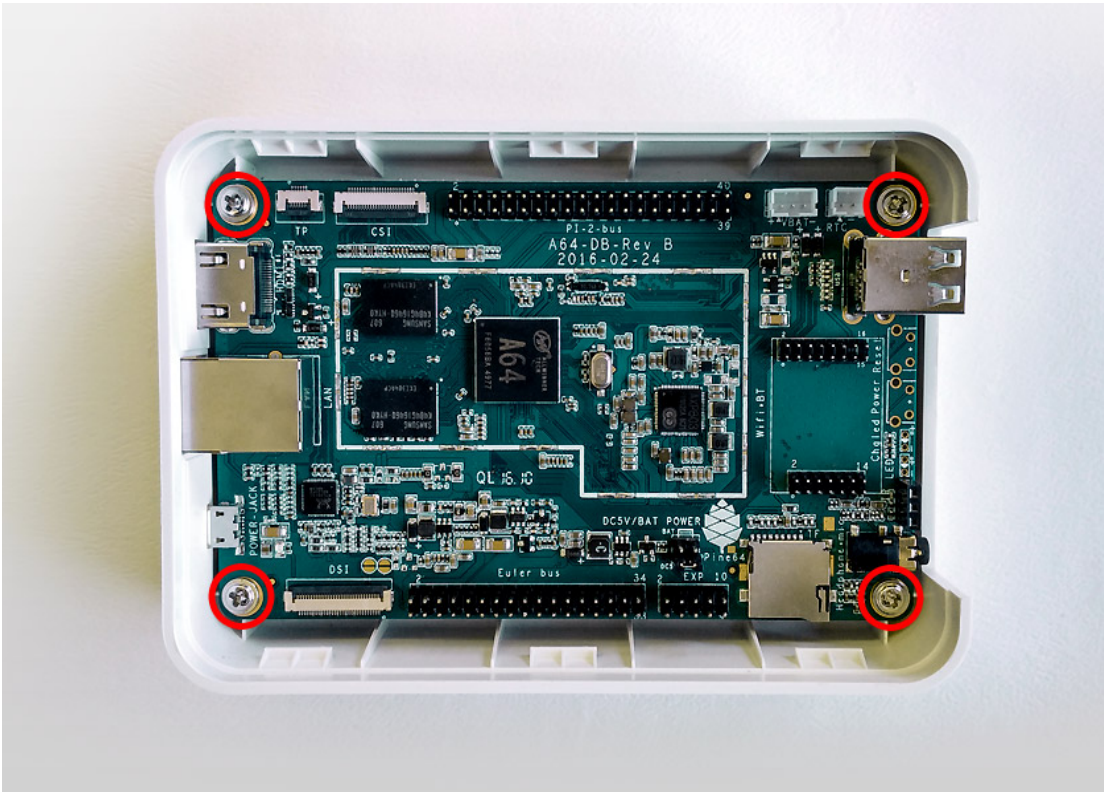
1 x ABS Enclosure Case

4 x Screws

Screw the PINE A64 to the ABS Enclosure Case

STEP 01 To lock the PINE A64 securely, screw the PINE A64 to the base of the ABS enclosure Case.





■ Snap-Fit your Enclosure Cover

STEP 02 Snap-fit the cover upright after you have done screwing the PINE A64 to the enclosure accordingly.





Congratulations! You have successfully installed the ABS Enclosure Case for PINE A64!

