
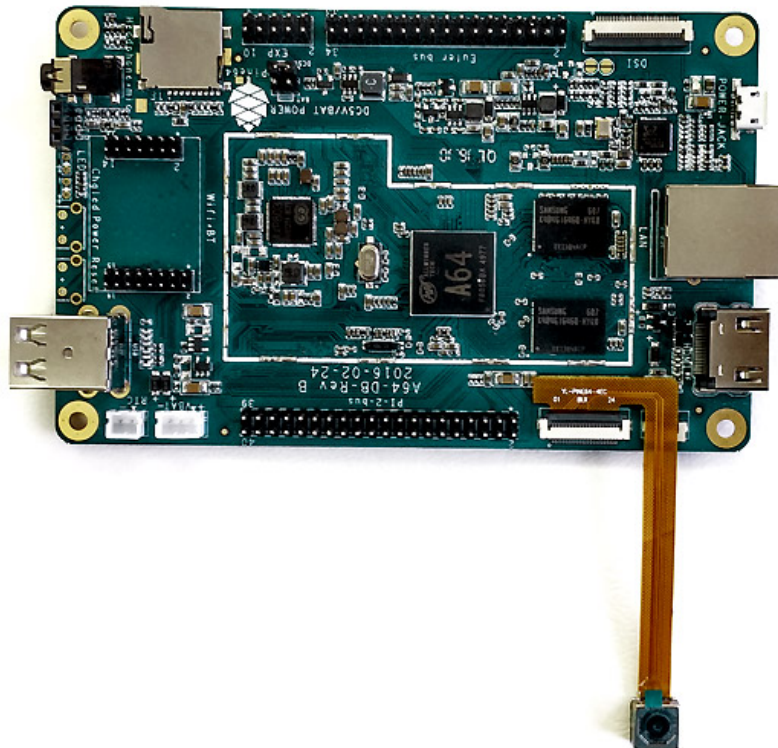


Installing 5MPixel Camera Module on PINE A64

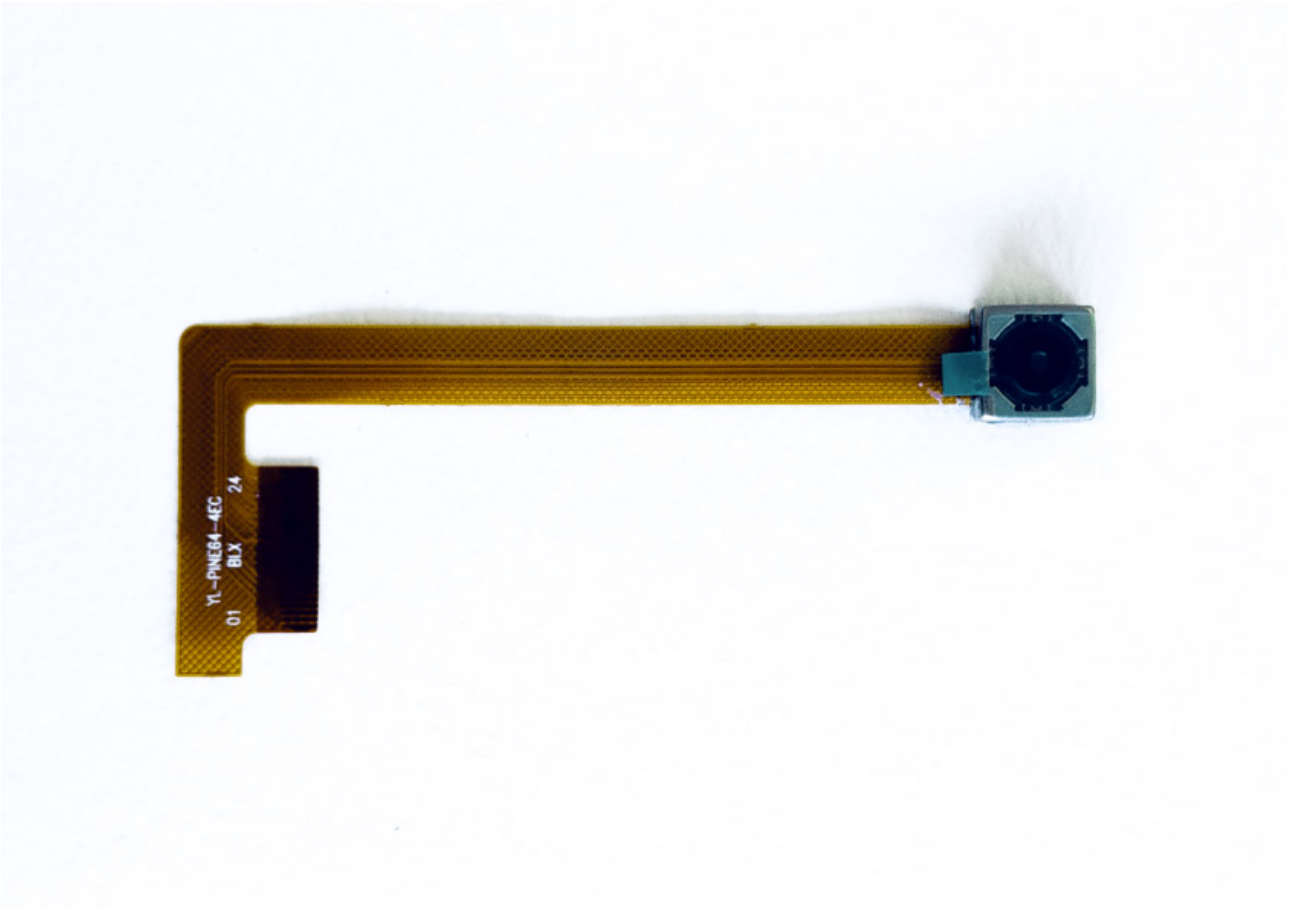
Description

This is the overview of the installation of 5MPixel Camera Module on PINE A64

 *This camera module cannot fit into 7" LCD Touch Screen Panel.*



■ Packaging and Content

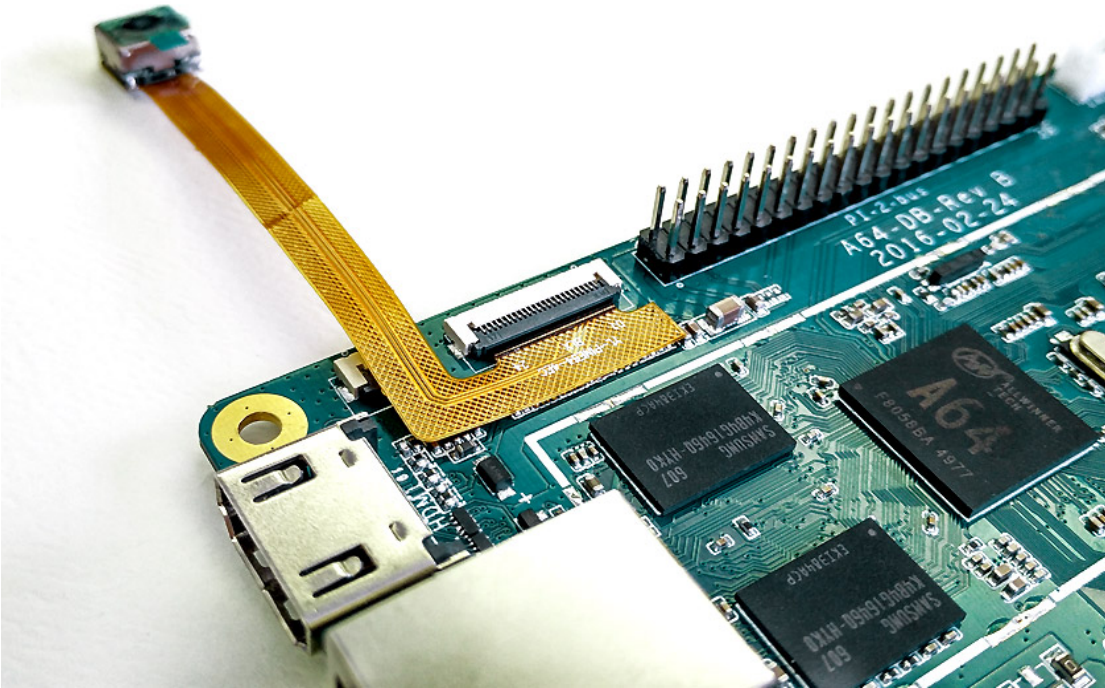


Package Content:

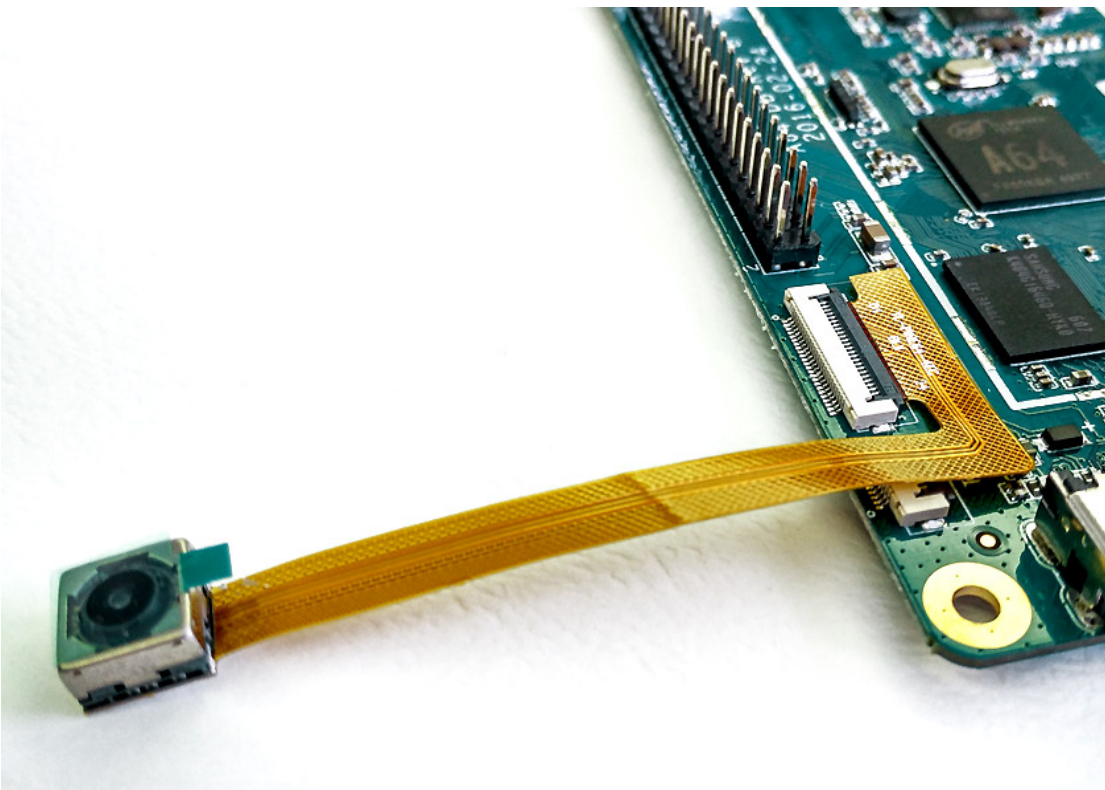
1 x 5MPixel Camera Module

Installing 5MPixel Camera Module on PINE A64

STEP 01 Insert the ribbon cable of the Camera Module into the CSI connector on the PINE A64.



Please note that the camera lens should be faced upward as shown below.



Congratulations! You have successfully installed the 5MPixel Camera Module on PINE A64!

